



Lift & Escalator Industry Association

33-34 Devonshire Street London W1G 6PY

Tel: 020 7935 3013 Fax: 020 7935 3321

E-mail: enquiries@leia.co.uk

Website: www.leia.co.uk

8th October 2004

To: All Members

**cc: The Quality and Technical Committee (Code No. 648)
The Maintenance Committee**

Dear Member,

SAFETY BULLETIN FROM SCHINDLER LTD.

Please find enclosed a Safety Bulletin from Schindler Ltd in connection with some glass anti-climb barriers on Schindler escalators and passenger conveyors that may have been incorrectly adjusted.

Details of the correct installation of the barriers is contained within the bulletin, however, should you require further information you are requested to contact the Schindler hotline on 01932 758 230.

Yours faithfully

Robert N Lee
Director, Technical Services



EMTA Awards Limited
Approved Assessment Centre

Registered in England N° 3851206.



Registered office as above.



Certificate N° 12368

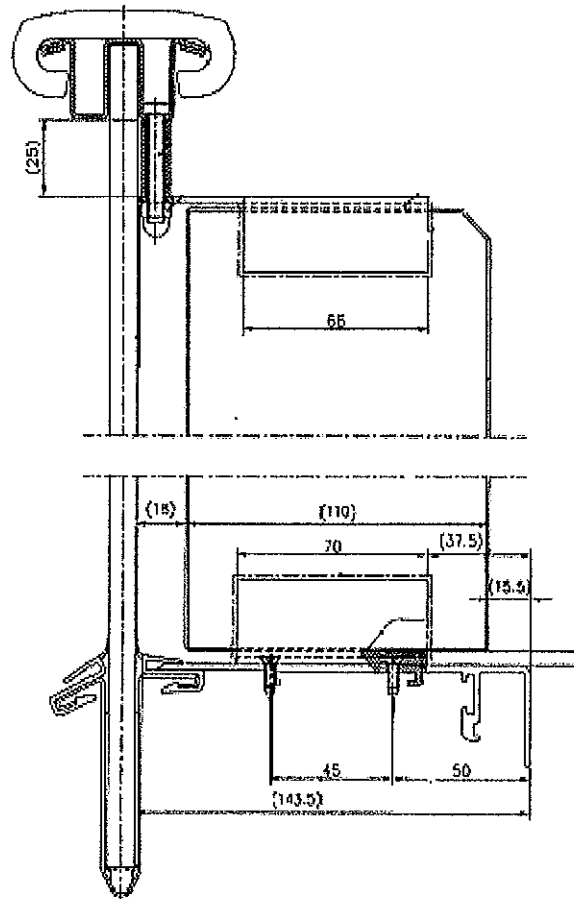
2004-08-01	
Revision	
1	0439
2	
3	
4	
5	

Escalator/ moving walk 9300 9500	ANTI-CLIMB BARRIER ESCALATORS & MOVING WALKWAYS	Schindler Ltd.
		NI / EI
Page 1/1		

Schindler

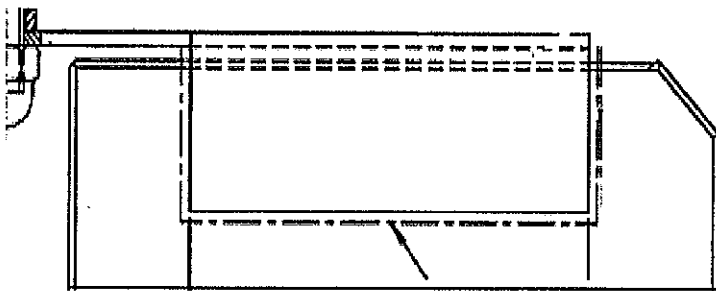
It is important that the glass anti-climb barriers are correctly installed to avoid creating any trapping points.

- The anti-climb glass is supplied with at least one chamfered corner. A chamfered corner must always be positioned at the top outside edge.
- A maximum gap of 18 mm is to be left between the anti-climb barrier and the balustrade glass.
- Rubber inserts are installed between the glass barrier and the support channels. The rubber must be left proud to prevent gaps between the glass and the support channels.



Checking the glass anti-climb barriers

1. Check the position of the chamfered corner, correct if necessary.
2. Check the gap between the barrier and the balustrade, adjust if necessary.
3. Check the rubber insert has been left with at least 1 mm exposed all the way round the support channel. If the rubber insert has been cut short (less than 1 mm proud) it must be replaced or use a suitable transparent silicone sealant to fill any gaps.



Edge of rubber insert left 1 mm proud all the way round

Replacing a rubber insert

To ensure the rubber insert is left proud, press a metal plate against the rubber and the edge of the U-shaped support channel and then cut off the excess rubber on the opposite side of the plate with a sharp knife.

If you require replacement rubber inserts, please contact our hotline on 01932-758-230

The illustrations above show the glass barrier with E-profile (without balustrade lighting). However, the same requirements apply to barriers for common decking and F-profile balustrades (with balustrade lighting).

written consent, it may not be copied in any form, used to manufacture the product, or passed on to third parties. (Art. 162 of the Penal Code & Copyright Act of 12/7/1992)