

# National Association of Lift Makers

# NALM

33/34 Devonshire Street London W1N 1RF

Director D M Fazakerley

telephone: 071-935 3013

fax: 071-935 3321

To: All Members  
cc: The Quality and Technical Committee (1896)

13 March 1995


Dear Sir,

## **Intermediate Guide Fixing for Goods Lifts**

I have been asked by Kone Lifts Ltd to circulate to all members their Safety Note on this subject which is enclosed.

Wherever appropriate would members please be guided accordingly.

Yours faithfully,



D M Fazakerley  
Director

KONE LIFTS LTD	Subject				CODE: SN 02.06.01
	<u>Intermediate guide fixing for goods lifts.</u>				Page 1 of 4
DEPT. TECH. SUPP	DATE 8.3.95	COMPILED BY A J Shiner	CHECKED <i>AJS</i>	APPROVED <i>AJS</i>	SAFETY CATEGORY A  ISSUE A

Please note the information below and the attached sheets received from the Hannover factory, and act accordingly.

**RE: intermediate guide fixing for goods lifts**

some of the goods lifts delivered by HuS/M1 with exp.shells for guide rail fixing were sent with an intermediate guide fixing (please find enclosure 1) .

We used a threaded rod where it can happen that due to the special carbon content, the rod can have a breach around the welding seam (stress concentration)

Please give an instruction to your maintenance people to have look at these threaded rods.

If necessary, in case of breaches, you can order a replacement set (enclosure 2 ) to change these intermediate guide fixings from W. Coxon, Materials Manager.

The lifts where we used these fixings you can find on page 4.

In case of an order (free of charge), please note:

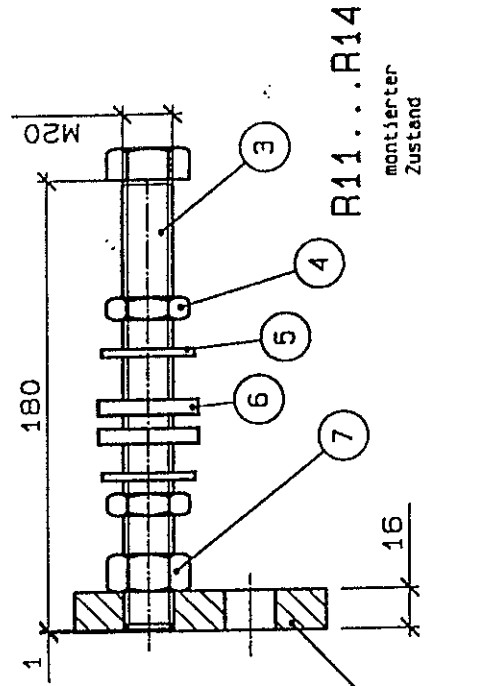
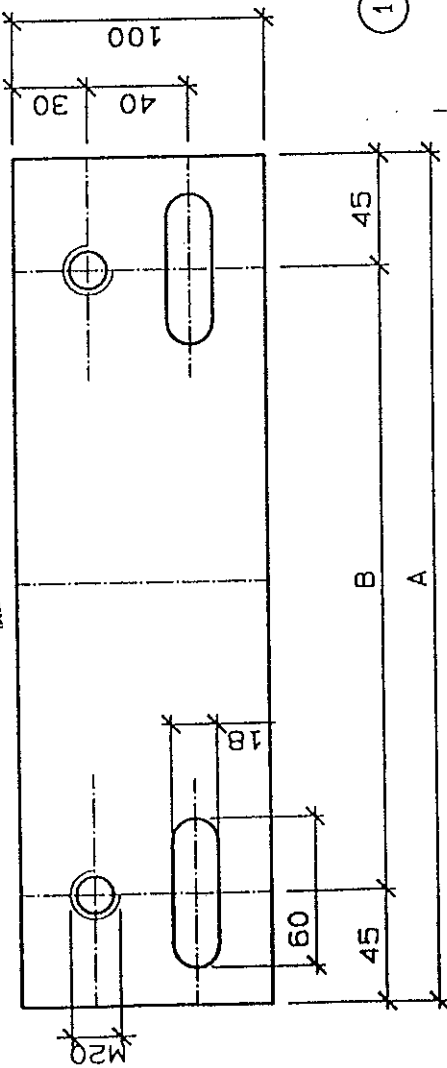
63312 H21 = instant. safety gear	/ 1 threaded rod
63312 H22 = "	/ 2 threaded rods
63312 H23 = progress. safety gear	/ 1 threaded rod
63312 H24 = "	/ 2 threaded rods

Included in gehört zu		Number	
Issue	Appear	Date	Drn
Revision		Appd	Min op
		M-file	

For diese Zeichnung behalten wir uns  
alle Rechte vor. (Gesetz über Urheberrecht)  
KONE Aufzug GmbH & Co. KG

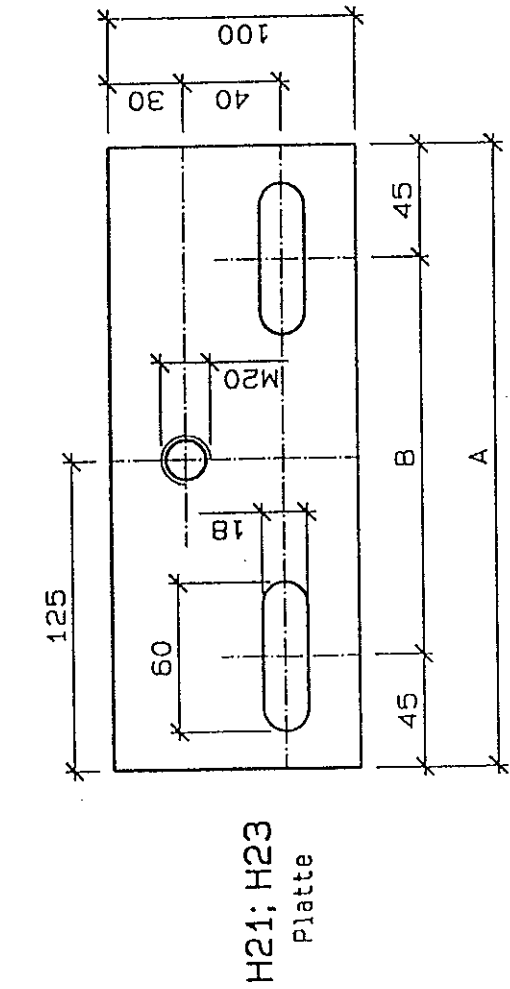
**ADVANCED-COPY  
VORAB-COPY**

H22; H24  
Platte



	A	B
Rollenfang	R11 H21	240   150
Rollenfang	R12 H22	340   250
Gleitfang	R13 H23	250   160
Gleitfang	R14 H24	250   160

Partlists see : 63312R11...63312R14  
Stücklisten siehe:



H21; H23  
Platte

H24	FL 100 x 16 DIN1017-St37-2 2501g
H23	FL 100 x 16 DIN1017-St37-2 2501g
H22	FL 100 x 16 DIN1017-St37-2 3401g
H21	FL 100 x 16 DIN1017-St37-2 2401g
Teil Item	Materialmessung und Qualität Material dimension and Quality
Drangmeister	CMG
Dr.	Lorenz
Dr. FM	95-08
 HANNOVER	
Guide bracket fixing Schienenbefestigung Zwischenstück Nachrüstsatz	
<b>63312 (2)</b>	

enclosure (2)

KONE LIFTS LTD	Subject			CODE: SN 02.06.01	
	<u>Intermediate guide fixing for goods lifts.</u>			Page 1 of 4	
DEPT. TECH. SUPP	DATE 8.3.95	COMPILED BY A J Shiner	CHECKED <i>Asst</i>	APPROVED <i>Asst</i>	ISSUE A

Please note the information below and the attached sheets received from the Hannover factory, and act accordingly.

**RE: intermediate guide fixing for goods lifts**

some of the goods lifts delivered by HuS/M1 with exp.shells for guide rail fixing were sent with an intermediate guide fixing (please find enclosure 1) .

We used a threaded rod where it can happen that due to the special carbon content, the rod can have a breach around the welding seam (stress concentration)

Please give an instruction to your maintenance people to have look at these threaded rods.

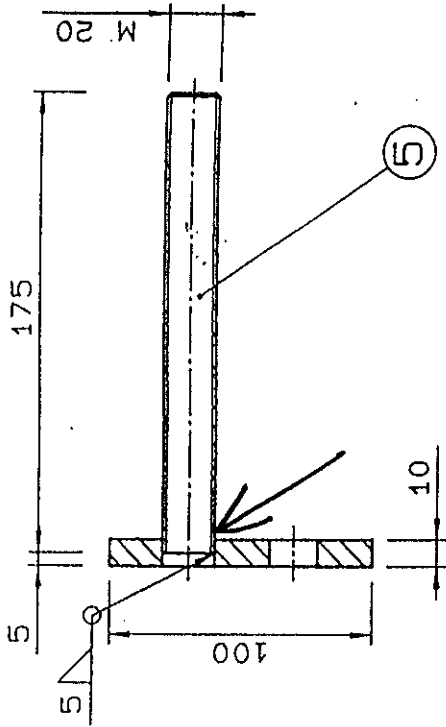
If necessary, in case of breaches, you can order a replacement set (enclosure 2 ) to change these intermediate guide fixings from W. Coxon, Materials Manager.

The lifts where we used these fixings you can find on page 4.

In case of an order (free of charge), please note:

63312 H21 = instant. safety gear	/ 1 threaded rod
63312 H22 = "	/ 2 threaded rods
63312 H23 = progress. safety gear	/ 1 threaded rod
63312 H24 = "	/ 2 threaded rods

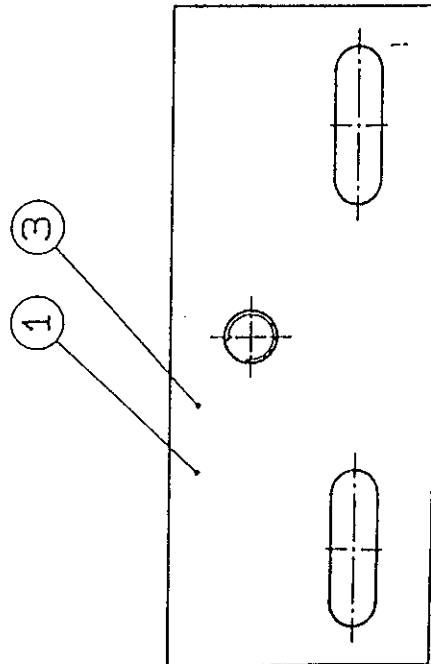
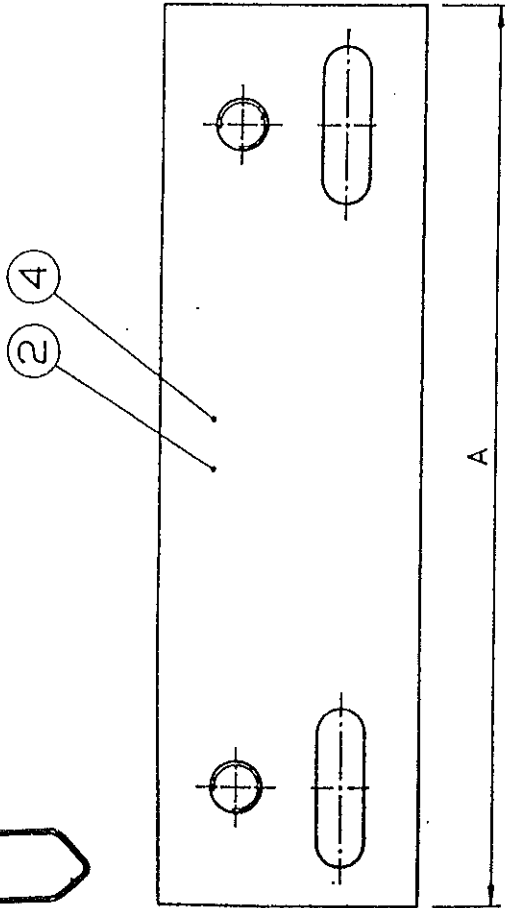
05. NOV. 1993



	A	B
G01	---	240
G02	340	---
G03	---	250
G04	250	---

2	1	2	1	H05	975	f. 2p.	244678
G04	G03	G02	G01	G05	Gewindestange M 20 x 175		
progress. safety gear	progress. safety gear	instant. safety gear	instant. safety gear	threaded bar	M 20 x 175		
bleifangvorrichtung	bleifangvorrichtung	rollenfangvorrichtung	rollenfangvorrichtung	Platte	H04		
bleifangvorrichtung	bleifangvorrichtung	rollenfangvorrichtung	rollenfangvorrichtung	Platte	H03		
bleifangvorrichtung	bleifangvorrichtung	rollenfangvorrichtung	rollenfangvorrichtung	Platte	H02		
bleifangvorrichtung	bleifangvorrichtung	rollenfangvorrichtung	rollenfangvorrichtung	Platte	H01		
bleifangvorrichtung	bleifangvorrichtung	rollenfangvorrichtung	rollenfangvorrichtung	Platte	H01		
bleifangvorrichtung	bleifangvorrichtung	rollenfangvorrichtung	rollenfangvorrichtung	Platte	H01		
bleifangvorrichtung	bleifangvorrichtung	rollenfangvorrichtung	rollenfangvorrichtung	Platte	H01		
bleifangvorrichtung	bleifangvorrichtung	rollenfangvorrichtung	rollenfangvorrichtung	Platte	H01		

Benennung/ title	Z.Nr. - lg.Nr.	Werkstoff	Material	drg.no. - st.no.
CMG	975			
Behandlung/finishes				
Hesse ohne Toleranzangabe nach DIN 7168				
fein - mittel - grob				
Oberflächen nach DIN ISO 1302				
Reihe 1 - 2 - 3 - 4				
Verwendung/application				
Zwischenstück Schienenbefest.				
intermediate guide fixing				
Zeichnung - Nr./Org. - no.				
63312				
page 1 of 1				
page (s)				



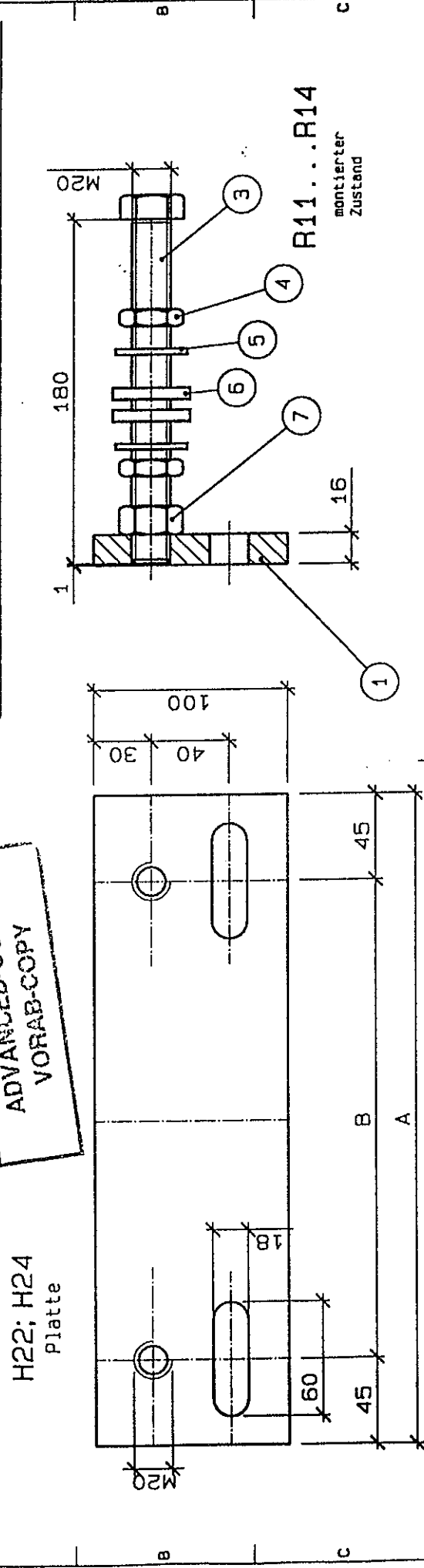
enclosure 1

5	6	7	8
Included in gehört zu	Number	Date	Drn
Issue	Appear	Revision	Inn copy
			file

For diese Zeichnung behalten wir uns alle Rechte vor. (Gesetz über Urheberrecht)  
KONE Aufzug GmbH & Co., KG

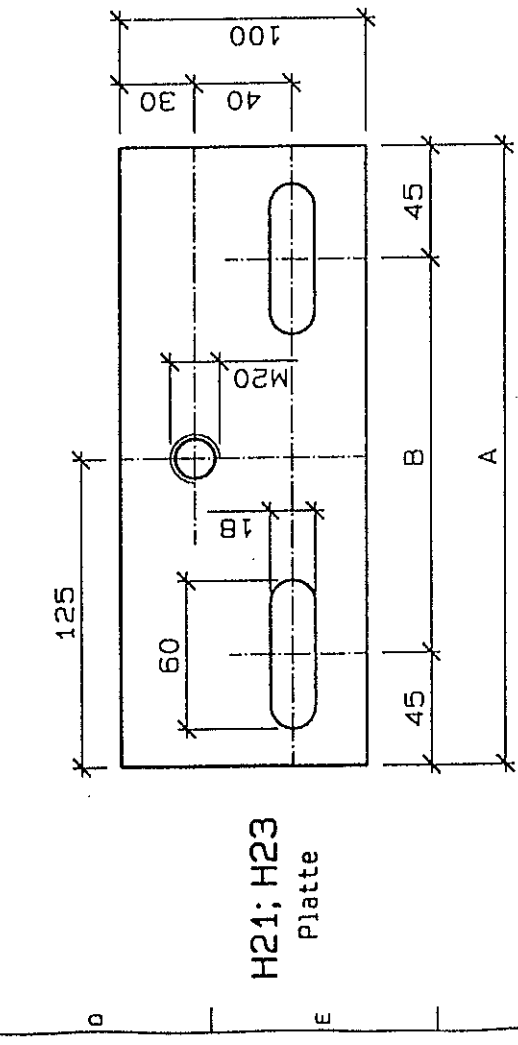
**ADVANCED-COPY  
VORAB-COPY**

H22; H24  
Platte



	A	B
Rollenfang R11	H21	240 150
Rollenfang R12	H23	340 250
Gleitfang R13	H23	250 160
Gleitfang R14	H24	250 160

Partlists see : 63312R11...63312R14  
Stücklisten siehe:



H24	FL 100 x 16	DIN1017-St37-2	25019
H23	FL 100 x 16	DIN1017-St37-2	25019
H22	FL 100 x 16	DIN1017-St37-2	34019
H21	FL 100 x 16	DIN1017-St37-2	24019
Teil item	Bezeichnung Identification Material dimension and Quality		
Drangmeister	Drangmeister	CMG	
Lorenz	Lorenz		
FM 95-08	FM 95-08		
KONE	KONE		
HANNOVER	HANNOVER		
Guide bracket fixing Schienenbefestigung Zwischenstück Nachrüstatz			
63312 (2)			

enclosure (2)

KONE LIFTS LTD	Subject  <u>Intermediate guide fixing for goods lifts.</u>			CODE: SN 02.06.01 Page 4 of 4 SAFETY CATEGORY A	
DEPT. TECH.SUPP	DATE 8.3.95	COMPILED BY A J Shiner	CHECKED <i>Askle</i>	APPROVED <i>Askle</i>	ISSUE A

Lift Nos.

993067

994031

994032

994061

994134

992267

992265

992238

992239

993090

993265

994084

994071

994188

992057

9936141

9936142

9936143

9921262

9947201

994048