



Lift and Escalator Industry Association

33-34 Devonshire Street London W1G 6PY
Tel: 020 7935 3013 Fax: 020 7935 3321

E-mail: leia.enquiries@virgin.net
Website: www.leia.co.uk

28th June 2002

To: All Members
cc: The Quality and Technical Committee (Code No. 539)

Dear Sir/Madam,

TECHNICAL SAFETY BULLETIN : DEVE CAR TOP INSPECTION CONTROL

Please find attached Safety Bulletin submitted by Schindler Ltd. In connection with a potential problem on Deve manufactured lifts installed with a DQ control system before 1st July 1999.

We trust that you will find this bulletin self explanatory and be guided accordingly.

Yours faithfully

Robert N Lee
Director, Technical Services



A company limited by guarantee.
Registered in England N° 3851206. Registered office as above.



Certificate N° 12368

Schindler Ltd

RECEIVED
28 JUN 2002

Schindler Ltd
Schindler House
3 Plane Tree Crescent
Feltham
Middlesex TW13 7HX
Telephone: 020 8818 7900
Fax: 020 8818 7999
Ref: EB/02/DEV1

Reg'd office Feltham
Reg'd No 662746 England

Date: 21 June 2002

For the Attention of Mr. David M Fazarkerley
Lift & Escalator Industry Association
33-34 Devonshire Street
London W1N 1RF

Re: Deve Car Top Inspection Control

Dear Mr. Fazarkerley,

We have discovered a potential problem with the car top inspection control on Deve manufactured lifts installed with a DQ control system before 1st July 1999 (i.e. those without the CE marking within the lift car).

A failure of the inspection input while on inspection control, could allow the lift to travel on normal after selecting an inspection travel direction.

In order to prevent the above, Schindler recommends the replacement of both the car top inspection switches (IS & IK) on all lifts installed before 1st July 1999 with a Deve DQ control system.

Schindler requests that any maintenance company having Deve DQ lifts in their portfolio, contacts Schindler in order to receive further information and the replacement switches (free of charge).

Your members are kindly requested to contact our hotline on 0208 818 7954. In addition, they should inform us of the Deve lift number and site address, so that we are able to check overall completeness of our search action.

Schindler kindly asks you to pass on this information to all your members. However, until the inspection switches are replaced, we request that all engineers are reminded to active the car top stop button when working on top of the lift.

Thank you very much for your support.

Yours sincerely,



Eddie Bye
Technical Director



Steve Reynolds
Technical Manager

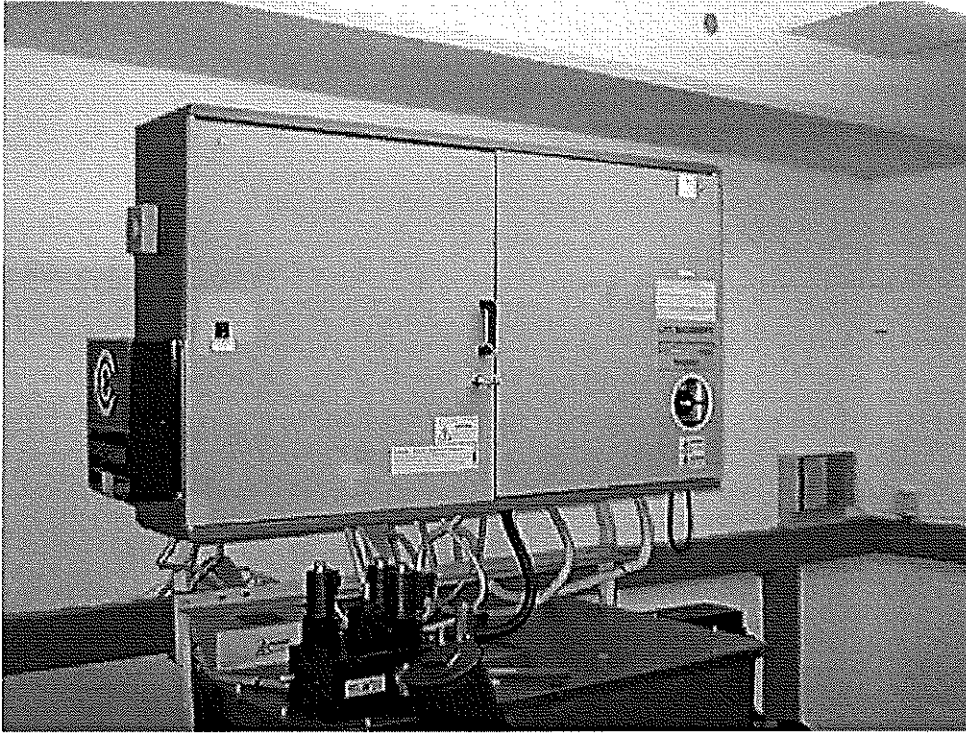
Enclosure:

- Identification of Deve DQ Control Systems



Identification of Deve DQ Control Systems

The Deve DQ control cabinet is mounted above the machine room hydraulic tank. However, lifts using this control system were installed under the names Deve, Deve Schindler and Schindler (all to be identified).



The cover on the PCB bay within the cabinet, is marked DQ.

