

**Lift & Escalator Industry Association**

33-34 Devonshire Street London W1G 6PY

Tel: 020 7935 3013 Fax: 020 7935 3321

E-mail: enquiries@leia.co.uk

Website: www.leia.co.uk

A growing event - bookings up 50%!

**Liftex 07**  
16-17 May • ExCeL • London

23<sup>rd</sup> January 2007

**To: All Members**

**cc: The Quality and Technical Committee (Code No. 712)  
The Maintenance Committee**

Dear member,

**SAFETY BULLETIN : E A FOULDS LIMITED**

Please find attached Safety Bulletin issued by E A Foulds Limited in connection with the potential malfunction of a particular range of their Flameproof gate locks.

I trust that you will find this bulletin self-explanatory and be guided accordingly.

Yours faithfully

Robert N Lee  
Director, Technical Services

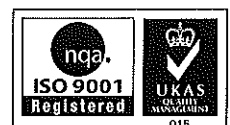


EMTA Awards Limited  
Approved Assessment Centre

**ELA** Member of the  
European Lift Association



Registered in England N° 3851206.  
Registered office as above.



Certificate N° 12368

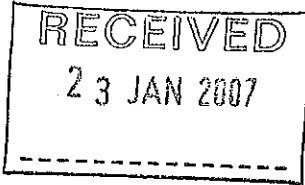
**E A FOULDS LIMITED**

ALBERT WORKS • CLIFTON STREET  
COLNE • LANCASHIRE • BB8 9AE

TEL: 01282 861500  
FAX: 01282 869655

email: info@fouldslifts.co.uk  
web site: www.fouldslifts.co.uk

**Foulds Lifts**



Our Ref : EAF/Corus

17<sup>th</sup> January 2007

Mr. D.M. Fazakerley  
Director  
LEIA  
33-34 Devonshire Street  
London  
W1 1RF

Dear Sir,

During a routine inspection of one of our Flameproof gate locks a sett screw was found to have worked loose. If this had continued the locking plate could have become detached and left the door un-locked and able to be opened when the lift was not there. These locks were manufactured between January 1996 and August 1997 and lie in the number sequence 924 to 986.

These locks can be identified from the previous type by the difference in shape, and from the later type which have a transparent cover and are in one piece.

Please could anyone that services a lift with this type of lock please ensure that the sett screw and two lock nuts, shown on the diagram, are tightened annually and treated with 'Thread Lock'.

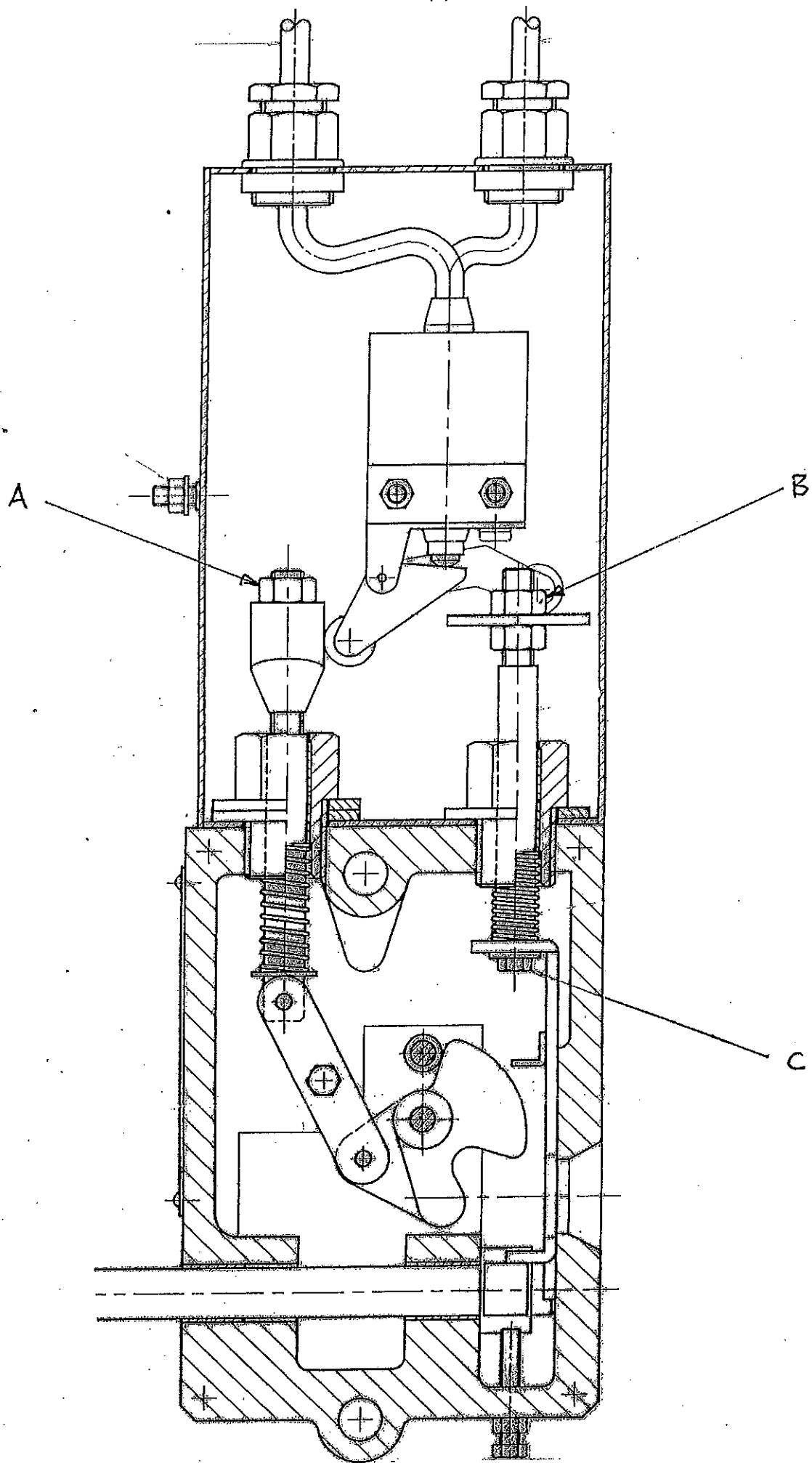
Yours faithfully,  
**E A FOULDS LIMITED**

E A Foulds  
Project Director

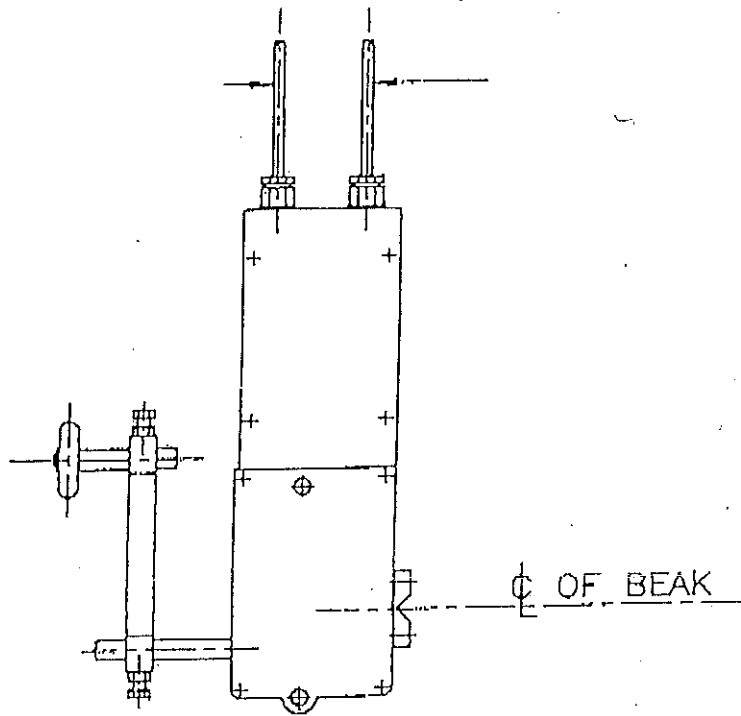
**OVER 75 YEARS OF SERVICE**



CERTIFICATE NUMBER 13774



LOCK WITH POTENTIAL PROBLEM



LOCKS WITHOUT PROBLEM

