



Lift and Escalator Industry Association

33-34 Devonshire Street London WIN 1RF
Tel: 0171 935 3013 Fax: 0171 935 3321

To: All Members
cc: The Quality and Technical Committee (Code No: QTC-185)

24 November 1998

Dear Sir/Madam

LIFTWISE LTD CORRECTIVE ACTION NOTICE HS-502/A

I enclose information received from the above company which I trust will prove self-explanatory.

Documents enclosed comprise corrective action notice HS-502/A 0798, hydraulic modification request form HS-112/A 0798 and corrective action completion form HS-113/A 0798.

Would members please be guided accordingly.

Yours faithfully

A handwritten signature in black ink, appearing to read 'D M Fazakerley', written over a horizontal line.

D M Fazakerley
Director



C

C

C

C

OUR REF:

HS-502\A-0798

YOUR REF:

DATE:

01.07.98



CORRECTIVE ACTION NOTICE

LIFTWISE

ELECTRICAL ANTI-CREEP SYSTEM

CONTROLLER TYPE

This safety notice is relevant to Liftwise manufactured hydraulic controllers, installed between May 1993 and May 1998.

Hydraulic lifts affected in this period, have contract numbers in the range 1798 - 2110.

Replacement hydraulic controllers for the same period are also included.

SYSTEM PROBLEM

Although **No** operating malfunctions have been reported, we have identified a potential risk in the design of our hydraulic Lift anti-creep circuit.

The circuit employs one independent electrical device for motor contactor control during anti-creep re-leveling. Should this device fail to open, the Lift could continue to re-level up, causing a hazardous situation.

CORRECTIVE ACTION

The circuit should be modified by the introduction of a further set of relay(DS) contacts, in series with the existing levelling relay(LV) contacts, which feed the MC contactor coil. The feed for the UP relay contacts should also be moved from terminal 3 to terminal 5.

The circuit before and after modification is shown in diagrams 1 and 2, on the reverse of this notice.

If a controller is identified, which does not have the standard motor start circuit shown in diagram 1, please submit Form HS-112\A-0798 to Liftwise and we will advise appropriate modifications, as necessary

Where a Down Stop(DS) relay is not presently used in the controller, One must be installed.

The (DS) relay coil(24V dc) should be connected to terminal 60(+ve) and terminal 28(-ve), with a diode connected in parallel.

Please refer to diagram 3, on the reverse of this notice.

The required wiring modifications must be completed with extreme care, to ensure safety circuits are **not** bridged.

1



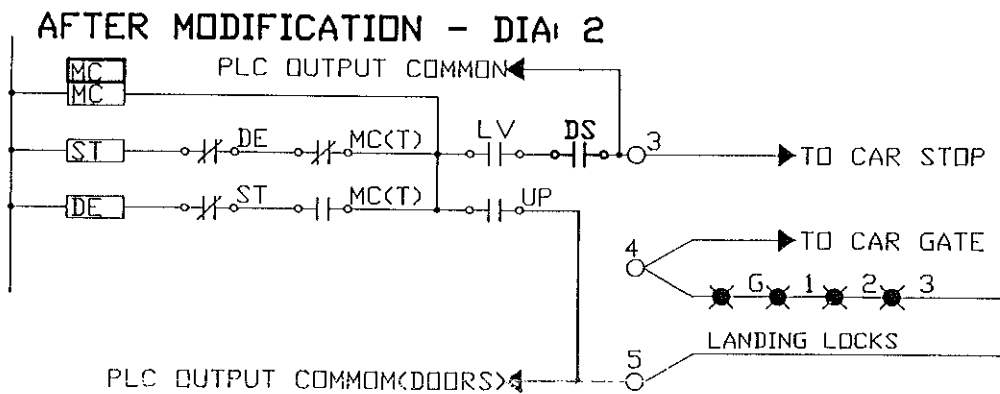
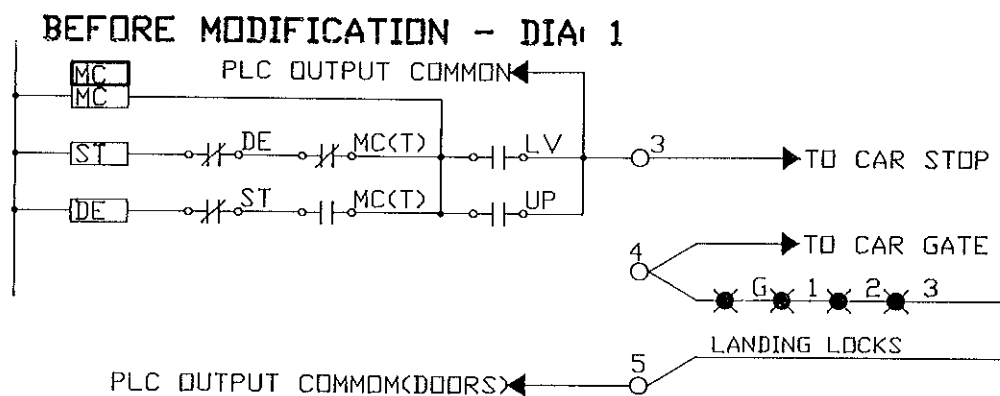
COMPLETION TESTS

The lift must be tested on completion of the modifications to ensure that opening of Down Stop relay(DS) prevents movement of the lift with its doors open, outside the unlocking zone, even if levelling relay(LV) is held in.

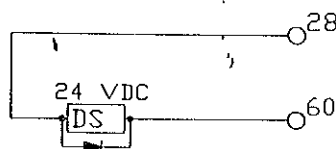
In addition to the above, the integrity of the lock circuits must be fully tested to ensure movement of the lift with lock circuits open is **ONLY** possible, when the lift is re-levelling in the unlocking zone.

MODIFICATION KIT

A kit of parts suitable for modification of standard hydraulic controllers, is available from Liftwise on request, free of charge, using Form HS-112VA-0798.



ADDITIONAL RELAY - DOWN STOP(DS) DIA: 3 (IF REQUIRED)

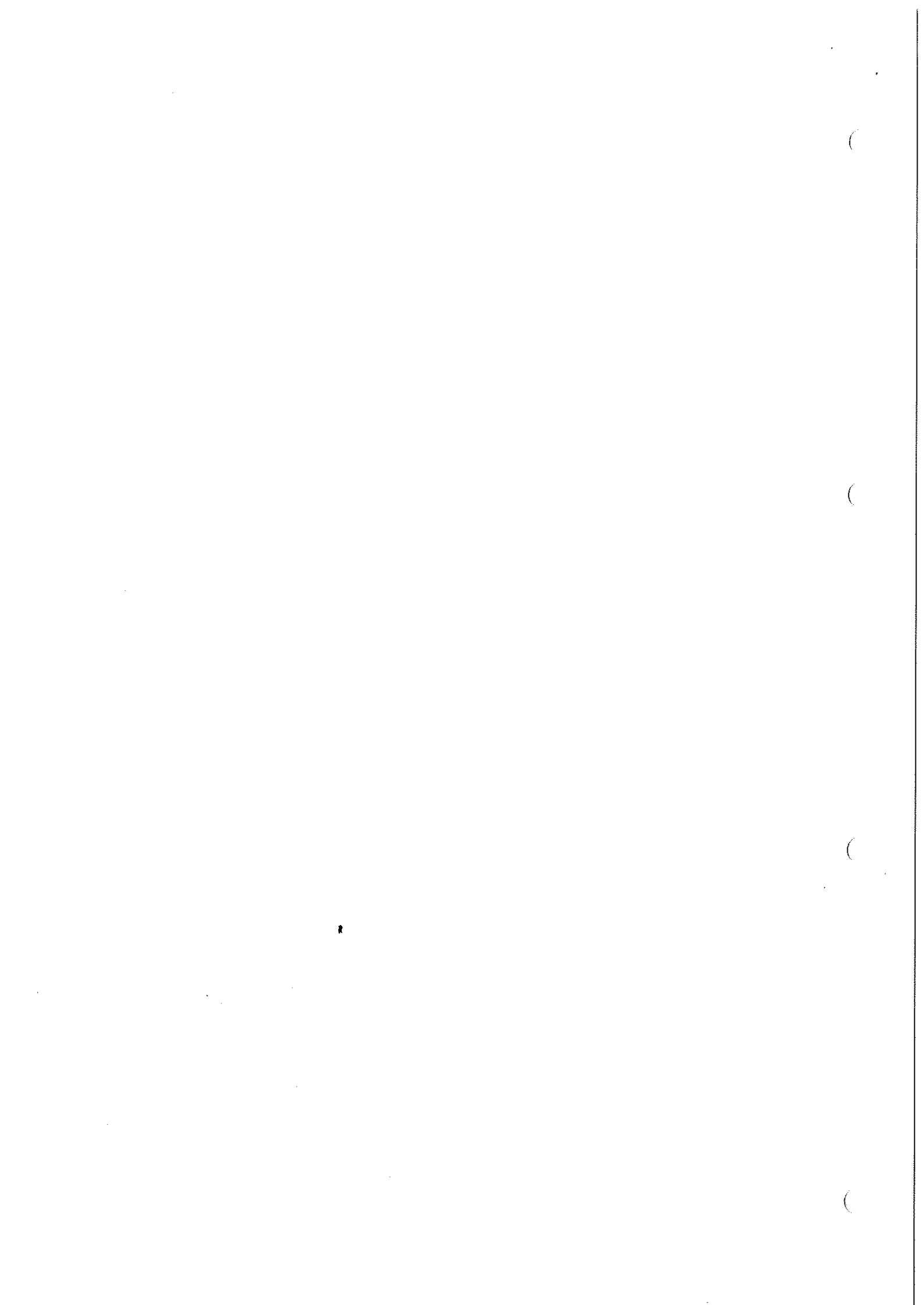


Should any further information be required, please contact:

Operations Department:

TEL: (01202) 824522

FAX: (01202) 826657



HYDRAULIC MODIFICATION REQUEST

TO: OPERATIONS DEPARTMENT
FAX: (01202) 826657

LIFTWISE LIMITED
8 BESSEMER CLOSE
EBBLAKE INDUSTRIAL ESTATE
VERWOOD
DORSET BH31 6AZ

PLEASE ACTION THE FOLLOWING:-

Tick

1. ADVISE CORRECT HYDRAULIC RELEVELLING MODIFICATION FOR THE LIFT/CONTROLLER, DETAILED BELOW:-
(Non-Standard)
2. FORWARD MODIFICATION KIT FOR LIFT/CONTROLLER, DETAILED BELOW:-

REQUESTED BY:-

NAME: _____

ADDRESS: _____

TELEPHONE NO: _____

FAX NO: _____

CONTACT NAME: _____

CONTRACT/CONTROLLER NUMBER: _____

