

National Association of Lift Makers

NALM

33/34 Devonshire Street London W1N 1RF

Director D M Fazakerley

telephone: 071-935 3013

fax: 071-935 3321

To: All Members
cc: The Quality and Technical Committee (1718)

10th September 1993

Dear Sir,

Keighley Lifts Ltd Lock Cam Return Spring

We have recently been advised of an incident where a lock cam return spring failed, the purpose of the spring is to keep the lock contacts in the open position as set by the removal of the lock beak when opening manual landing doors.

From laboratory tests carried out by Keighley Laboratories Ltd, report reference TS.113781-2 (copy available on request), the failure occurred due to wear of the spring within the cam assembly, which would have been prevented by lubricating the spring with a general purpose grease (see attached drawing) at yearly intervals. The replacement spring part number is 008/00923.

Members are requested to be guided accordingly and should they require any further information please contact Mr Alan C. John, Technical Manager, Schindler Ltd on 0535 605533, telefax 0535 600 936.

Yours faithfully,



D M Fazakerley
Director

MACHINING MARKS	⊕	MACHINE ALL OVER	MANUFACTURING TOLERANCES FOR MACHINED DIMENSIONS UNLESS OTHERWISE STATED.						
	f	ROUGH FINISH	SIZE	OVER UP TO & INCLUDING	0	3/8"	1/4"	3/2"	10"
	ff	FINE FINISH			5/8"	1 1/4"	3 1/2"	10"	
	G	GROUND	DIAMETERS		+0.000" -0.005"	+0.000" -0.010"	+0.000" -0.015"	+0.000" -0.020"	
			HOLES AND BORES		+0.005" -0.000"	+0.010" -0.000"	+0.015" -0.000"	+0.020" -0.000"	
			LENGTHS ETC.		±0.010"	±0.010"	±0.015"	±0.020"	±1/32"

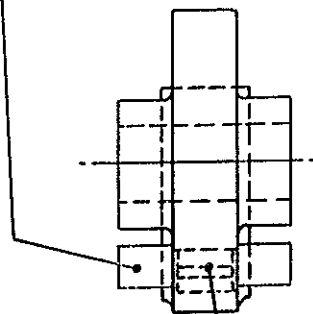
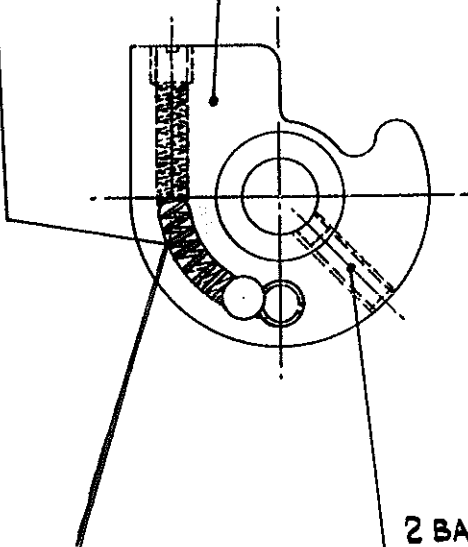
08/00923.

7924
S

7934
G

7935
T

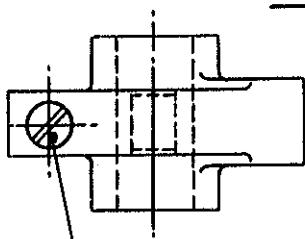
16/056/07



8071
S

LUBRICATE THIS AREA

2 BA HEX SOCKET GRUB-SCREW
KNURLED CUP POINT 1/2" LONG
BP 7944.



1/4" B.S.F. BRASS GRUB-SCREW
1/4" LONG. BP. 7948

18459-M

TRACED DB 25.6.68
CHECKED MD 26.6.68

ISSUED TO DEPTS.
J M F E I

KEIGHLEY LIFTS YORKS.

PART No. PATT. No. & DRG. No.
16/056/06

MOD'N.	MOD'N.	MOD'N.	MATERIAL	SCALE	DRAWN	MD
1	2	3	/	FULL SIZE	CHECKED	
PART SUB-ASSEMBLY OF CAM. (LONG CONTACT BAR). PRELOCK TYPE 2.				DATE 6.6.68	APPROVED	