



**Lift & Escalator Industry Association**

33-34 Devonshire Street London W1G 6PY

Tel: 020 7935 3013 Fax: 020 7935 3321

E-mail: [enquiries@leia.co.uk](mailto:enquiries@leia.co.uk)

Website: [www.leia.co.uk](http://www.leia.co.uk)

10<sup>th</sup> January 2008

**To: All Members**

**cc: The Quality and Technical Committee (Code No. 738)  
The Maintenance Committee**

Dear Member,

**SAFETY BULLETIN FROM STANNAH LIFT SERVICES LIMITED**

Please find attached a copy of a Safety Bulletin from Stannah Lift Services Ltd. in connection with a potential hazard created when excessive wear of the seat swivel lock is caused by the manual swivel lever not being fully depressed when the chair is swivelled.

We trust that you will find this bulletin self explanatory and be guided accordingly.

Yours faithfully

Robert N Lee  
Director, Technical Services



# IMPORTANT NEW SERVICE PROCEDURE FOR 240/250/260/300/400 WLS/SAXON CHAIR SWIVEL LOCK



A thorough inspection of the Saxon chair swivel lock security must now be carried out during all future routine service visits. This inspection will involve partial dismantling of the chair.

The following tools are required:

- 6mm A/F hex drive and small ratchet wrench
- Torque wrench set to 16Nm
- Rag/cloth
- Superlube grease
- Loctite 243 or equivalent thread locking product.



Step 1 Vigorously swivel the chair in both the locked travelling position and in the fully swivelled position. If the chair is held securely proceed to Step 2. If it comes out of either locked position proceed to Step 3.

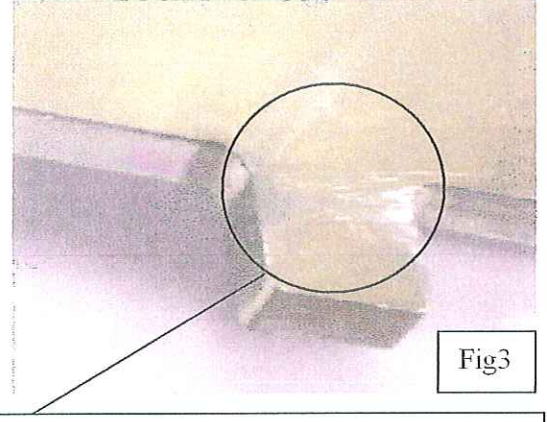
Step 2 Remove the four M8x12 socket cap head screws (see fig 1 and 2 overleaf) and position the chair so that you get clear vision of the bearing plate and swivel lever lock tab. Note the Bowden cables and looms do not need to be disconnected. Clean away any grease to get a good look at the metal surfaces. A mechanism that has been used correctly will have hardly any wear on its surfaces (see fig 3 overleaf). If you are satisfied with the condition of the components, apply fresh grease and re-assemble. Apply Loctite 243 (or equivalent) to the four M8 screws and tighten to 16Nm. If you are not satisfied with the condition of the locking tab (see figs 4 to 8 overleaf) then proceed to Step 3.

Step 3 The worn parts must be replaced. Kits are available from our Spares Department and all the parts contained in this kit **must** be changed at the same time. The kit numbers are as follows :-

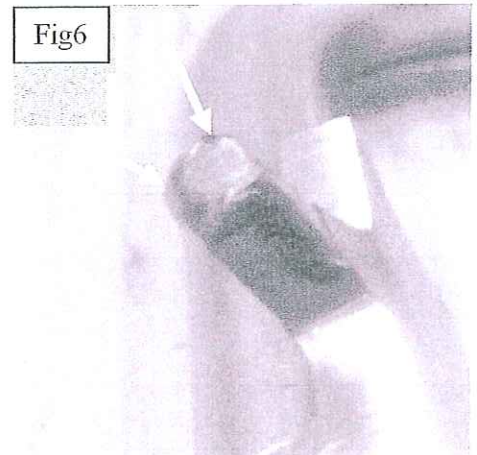
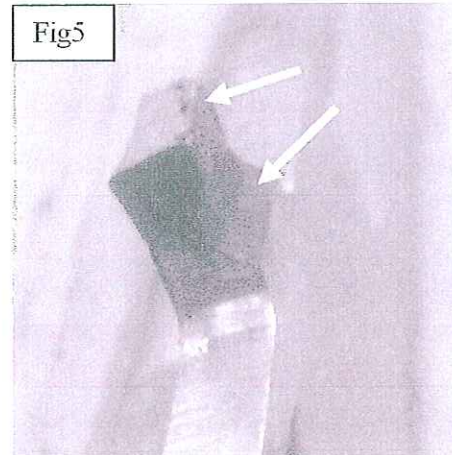
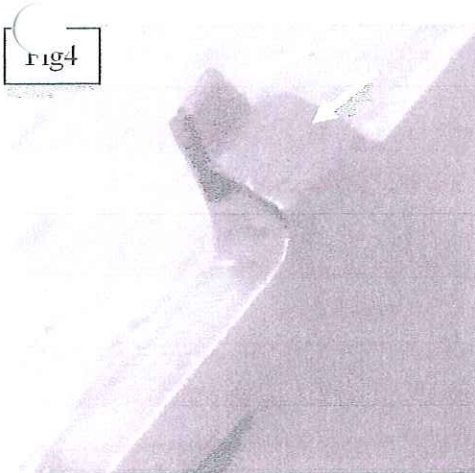
- 2401060 - Model 240/250 WLS Swivel Boss/lever assembly kit
- 2601080 - Model 260 Saxon Swivel Boss/lever assembly kit
- 40010661 - Model 300/400 Swivel Boss/lever assembly kit L/H
- 40010662 - Model 300/400 Swivel Boss/lever assembly kit R/H
- 4001068 - Model 300/400 Powered Swivel/lever assembly kit

For the safety of the customer, the product must not be used until this work is carried out.

# IMPORTANT NEW SERVICE PROCEDURE FOR 240/250/260/300/400 WLS/SAXON CHAIR SWIVEL LOCK



Example of a good lock tab. Slight scratching on surface is acceptable.



Examples of excess wear on the lock tab

