

# National Association of Lift Makers

33/34 Devonshire Street London W1N 1RF

Director D M Fazakerley

# NALM

telephone: 071-935 3013

fax: 071-935 3321

To: All Members  
cc: The Quality and Technical Committee (Code No: 1583)

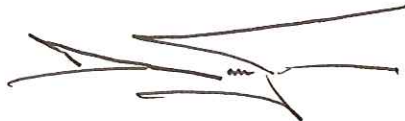
8 December 1992

Dear Sir

## **SAFETY CHECK ON SYNCHRONISATION OF ADX 2 PANEL SIDE OPENING DOORS**

I have received the enclosed information from Kone Lifts Ltd and would ask that members be guided accordingly.

Yours faithfully



D M Fazakerley  
Director

4th December 1992

Our Ref: AJS/JMH

Your Ref:

National Association of Lift Makers  
33-34 Devonshire Street  
London  
W1N 1RF

For the attention of Mr D Fazakerley

Dear David

Please circulate the attached Safety Notice to the membership and other relevant parties who could be affected.

This information has been passed to us from our factory in Germany.

At this time we do not have any experience of the problem occurring in this country, however it is better to be cautious in such matters.

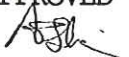
Yours sincerely

A handwritten signature in black ink, appearing to read 'ASShiner', with a long horizontal flourish extending to the right.

Adrian Shiner  
Technical Manager

Encl:

A:LAS4-12

|                      |   |                           |                       |   |   |
|----------------------|---|---------------------------|-----------------------|---|---|
| KONE LIFTS<br>LTD    | Subject<br><br><u>Safety check on Synchronisation of ADX 2 Panel<br/>Side Opening Doors</u> |                           |                       |   | CODE: SN 03.13.01<br><br>Page 1 of 9<br><br>SAFETY CATEGORY A |
| DEPT.<br>CENTRAL ENG | DATE<br>4.12.92   | COMPILED BY<br>A J SHINER | CHECKED<br>A J SHINER | APPROVED<br> | ISSUE<br>A  |

1. Please refer to the attached information sheets.
2. The condition of the synchronisation rollers and locking plate must be checked at the next service visit.
3. If the door requires replacement parts, these can be obtained from the Central Stores at Kone Lifts, 168-170 Wellington Road South, Hounslow, Middlesex, TW4 5JN

**EXPRESS INFORMATION****ADX2 CAR DOORS**

=====

A dangerous failure with ADX2 panels and synchronisation has been found. The slower panel may be open and the fast panel is closed while the elevator is running. This is caused by two simultaneous failures.

1. The locking plate on the fast door panel is not installed during the installation and
2. The roller at synchronisation rod has fallen out.


**ACTIONS**

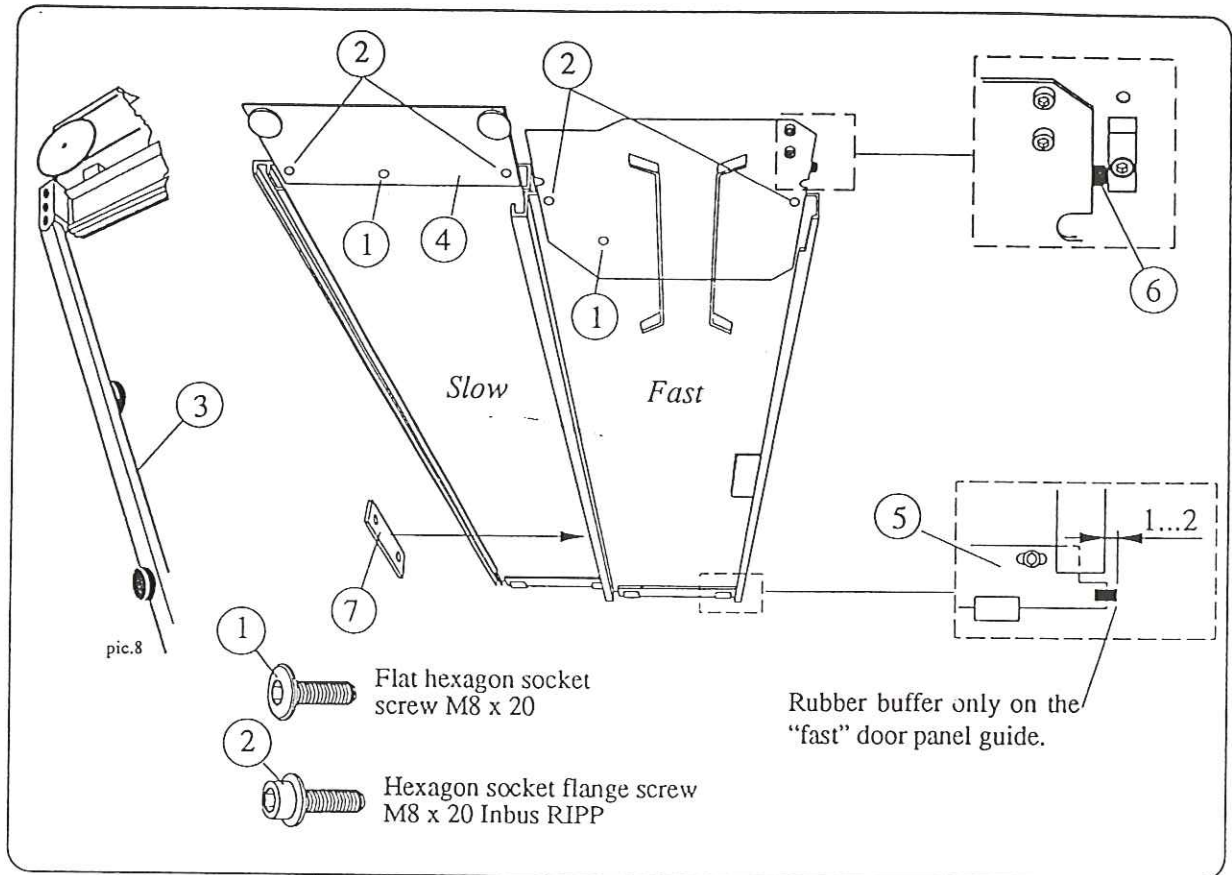
1. Check that all ADX2 CAR DOORS have the locking plate installed at the rear edge of the fast panel. If not get it done immediately. The order mark is 61863H02 from HDF Hannover FAX 49-511-2148147
2. Check that the shaft of rollers, and rollers are properly fixed on the synchronisation rod. If they are loose or worn out order new rod from HDF Hannover order marks: ADX2L rod 61527G13  
ADX2R rod 61527G14

This note concerns all ADX2 car doors.  
The fixing of door panel locking plate is shown in updated  
AM 3.13.21 issue A pages 7&8.  
AR 3.14.2 issue B pages 18-19 & 22-23

Best regards

  
Harri Ojala

  
Tage Lindfors



- Install the synchronization rod (3) onto the top track with loosely tightened screw joints.
- Drive the car in level with the landing door.
- Place the unmounted hangerplate (4) into the track.
- Install the "slow" door panel to the hangerplate with loosely tightened screws (1) and (2). Note! The screw (1) has to be total inscrewed but not final tightened. The screw (1) has a function as an axle when aligning the door panel.
- Install the bottom guide (5).
- Adjust the door panel in line with the side post. Tighten the screws (1) and (2).
- Drive the car in position 30...35 cm above the landing door sill.
- Lift in the "fast" door panel, up and behind the hanger plate.
- Install the bottom guide.
- Drive the car in position 30...40 cm under the landing door sill, so the coupler is below the rollers.
- Install the "fast" door panel onto the hanger plate with loosely tightened screws (1) and (2).
- Align the door panel against the slam post (must be checked from inside car). Tighten the screws (1) and (2).

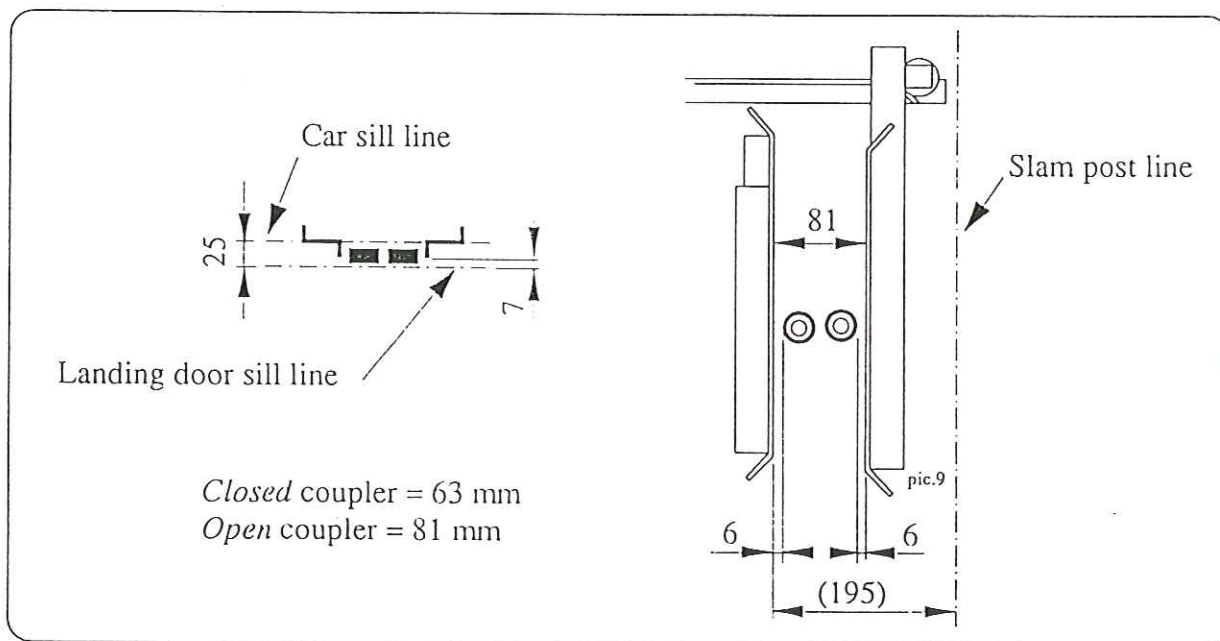
- Put in the synchronization rod rollers into the door panel tracks, gently bending the rod.
- The both door panels must be in line with the side post when the door is open and when the door is closed must the gap between the "fast" door panel and the slam post be 1...2 mm. Adjust from the "fast" door panel end rubber buffers.
- Open and close the door a few times and then tighten the synchronization rod screw joints when the door is in open position.
- Install the lock plate (7) to the "fast" door panel.

### 10 DOOR CONTACT

- Check that (and adjust) the bridge beeing closing the circuit when the gap between the "fast" door panel and the slam post is 4 mm.

### 11 DOOR COUPLER

#### 11.1 RUNNING CLEARANCE



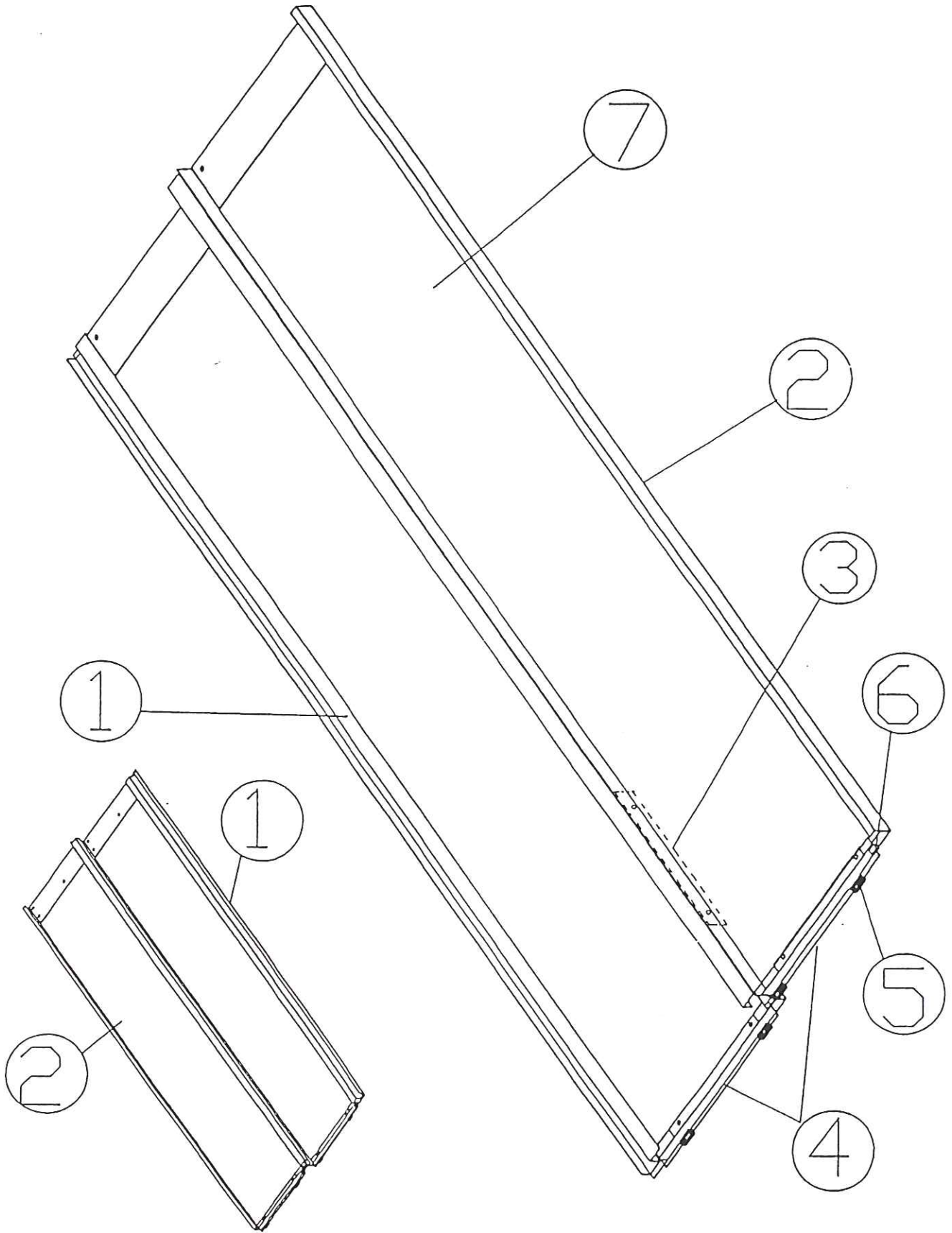
- Run the car to each landing door and check up the running clearance as shown in the figure.
- Adjust the landing door lock rollers if needed, see the landing door instruction.

#### NOTE!

The door coupler is adjusted at the factory and normal there is no need to readjusting at site. However, it is recommended to check the factory adjustments before running the car, as mentioned in paragraph 11.2, page 9.

Electrification and commissioning of the door drive, see AME (AM2) instructions. The checking of running clearance can also be worked out with non-electrified car door operator, see paragraph 11.3, page 9.

ADX2 DOOR PANELS



| POS. | PART NUMBER | DESCRIPTION           | REMARKS  | A) | B) |
|------|-------------|-----------------------|--|----|----|
| 1.   | 61340G...   | ADX2L Slow door panel | Zincal, See table!                             | 1  |    |
|      | 61360G...   | ADX2L Slow door panel | Stainless steel, See table!                    | 1  |    |
|      | 61341G...   | ADX2R Slow door panel | Zincal, See table!                             | 1  |    |
|      | 61361G...   | ADX2R Slow door panel | Stainless steel, See table!                    | 1  |    |
| 2.   | 61342G...   | ADX2L Fast door panel | Zincal, without photocell, See table!          | 1  |    |
|      | 61362G...   | ADX2L Fast door panel | Stainless steel, without photocell, See table! | 1  |    |
|      | 61352G...   | ADX2L Fast door panel | Zincal, with photocell, See table!             | 1  |    |
|      | 61372G...   | ADX2L Fast door panel | Stainless steel, with photocell, See table!    | 1  |    |
|      | 61347G...   | ADX2L Fast door panel | Zincal, with safety edge, See table!           | 1  |    |
|      | 61367G...   | ADX2L Fast door panel | Stainless steel, with safety edge, See table!  | 1  |    |
|      | 61343G...   | ADX2R Fast door panel | Zincal, without photocell, See table!          | 1  |    |
|      | 61363G...   | ADX2R Fast door panel | Stainless steel, without photocell, See table! | 1  |    |
|      | 61353G...   | ADX2R Fast door panel | Zincal, with photocell, See table!             | 1  |    |
|      | 61373G...   | ADX2R Fast door panel | Stainless steel, with photocell, See table!    | 1  |    |
|      | 61348G...   | ADX2R Fast door panel | Zincal, with safety edge, See table!           | 1  |    |
|      | 61368G...   | ADX2R Fast door panel | Stainless steel, with safety edge, See table!  | 1  |    |

| POS. 1 and 2 ; ...G...       |                          |     |     |     |      |      |
|------------------------------|--------------------------|-----|-----|-----|------|------|
| HH =<br>Clear opening height | LL = Clear opening width |     |     |     |      |      |
|                              | VAR                      | 700 | 800 | 900 | 1000 | 1100 |
| 1900                         | G01                      | G02 | G03 | G04 | G05  | G06  |
| 2000                         | G11                      | G12 | G13 | G14 | G15  | G16  |
| 2100                         | G21                      | G22 | G23 | G24 | G25  | G26  |

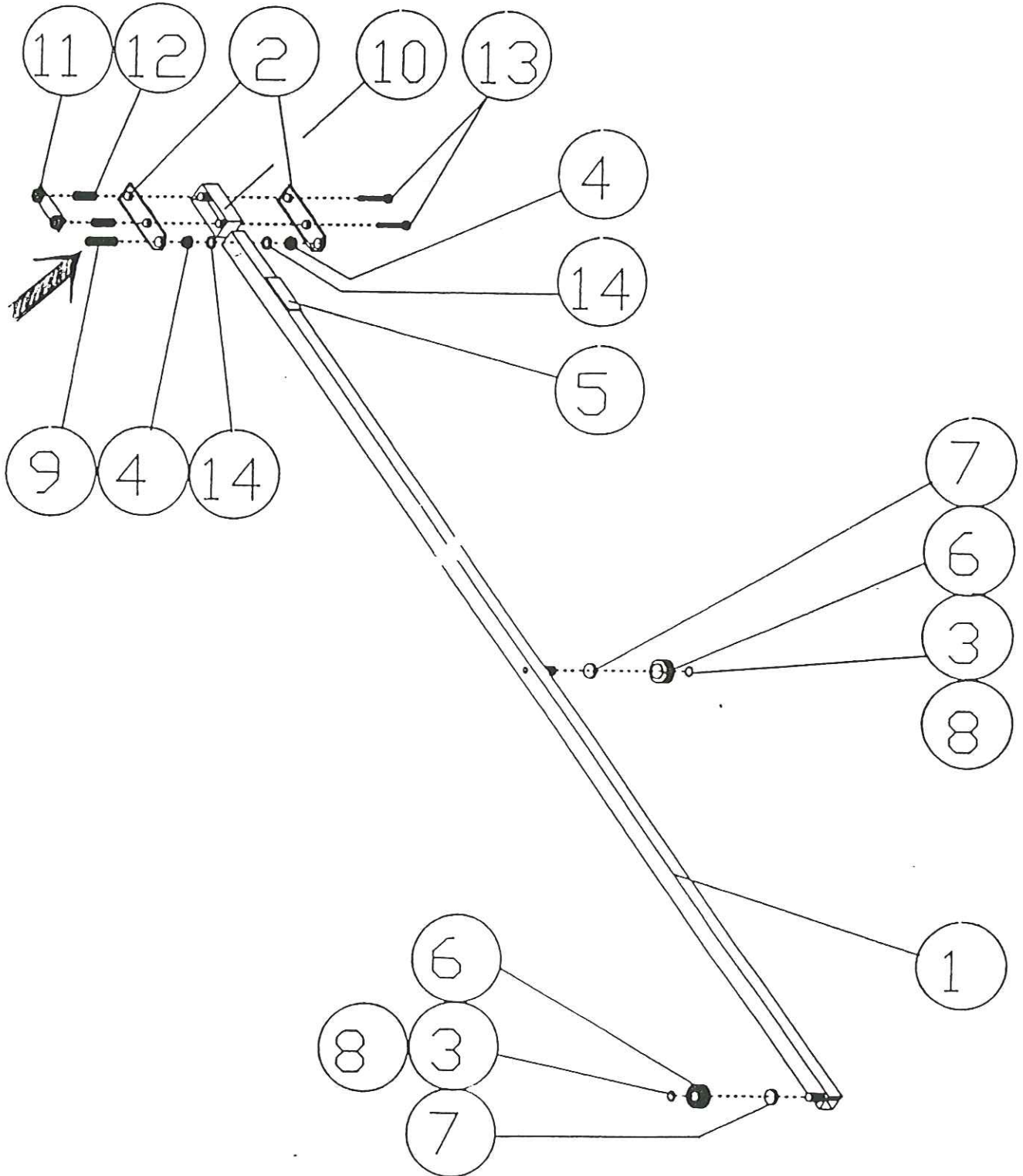
|    |           |                      |                                 |  |  |  |  |   |   |
|----|-----------|----------------------|---------------------------------|--|--|--|--|---|---|
| 3. | 61863H02  | Safety plate         |                                 |  |  |  |  | 1 |   |
| 4. | 61521G... | Guide shoe, complete | with safety edge, See table!    |  |  |  |  | 2 |   |
|    | 61522G... | Guide shoe, complete | standard door panel, See table! |  |  |  |  | 2 |   |
| 5. | 61523H01  | Guide shoe           |                                 |  |  |  |  | 4 | 4 |
| 6. | 61524H02  | Buffer               |                                 |  |  |  |  |   |   |
| 7. | 257615    | Antidrumming plate   | Terodem 2002 100x1000           |  |  |  |  |   |   |
|    | 257616    | Antidrumming plate   | Terodem 2002 150x1000           |  |  |  |  |   |   |
|    | 257617    | Antidrumming plate   | Terodem 2002 200x1000           |  |  |  |  |   |   |

| POS. | PART NUMBER | LL = Clear opening width |     |     |     |      |      |
|------|-------------|--------------------------|-----|-----|-----|------|------|
|      |             | VAR                      | 700 | 800 | 900 | 1000 | 1100 |
| 4.   | 61521G...   | G01                      | G02 | G03 | G04 | G05  | G06  |
|      | 61522G...   | G01                      | G02 | G03 | G04 | G05  | G06  |

- A) Number of parts in one assembly  
 B) Recommended number of stocked spare parts for 1...6 lifts



ADX2L SYNCRONISATION LEVER 61527G13  
ADX2R SYNCRONISATION LEVER 61527G14

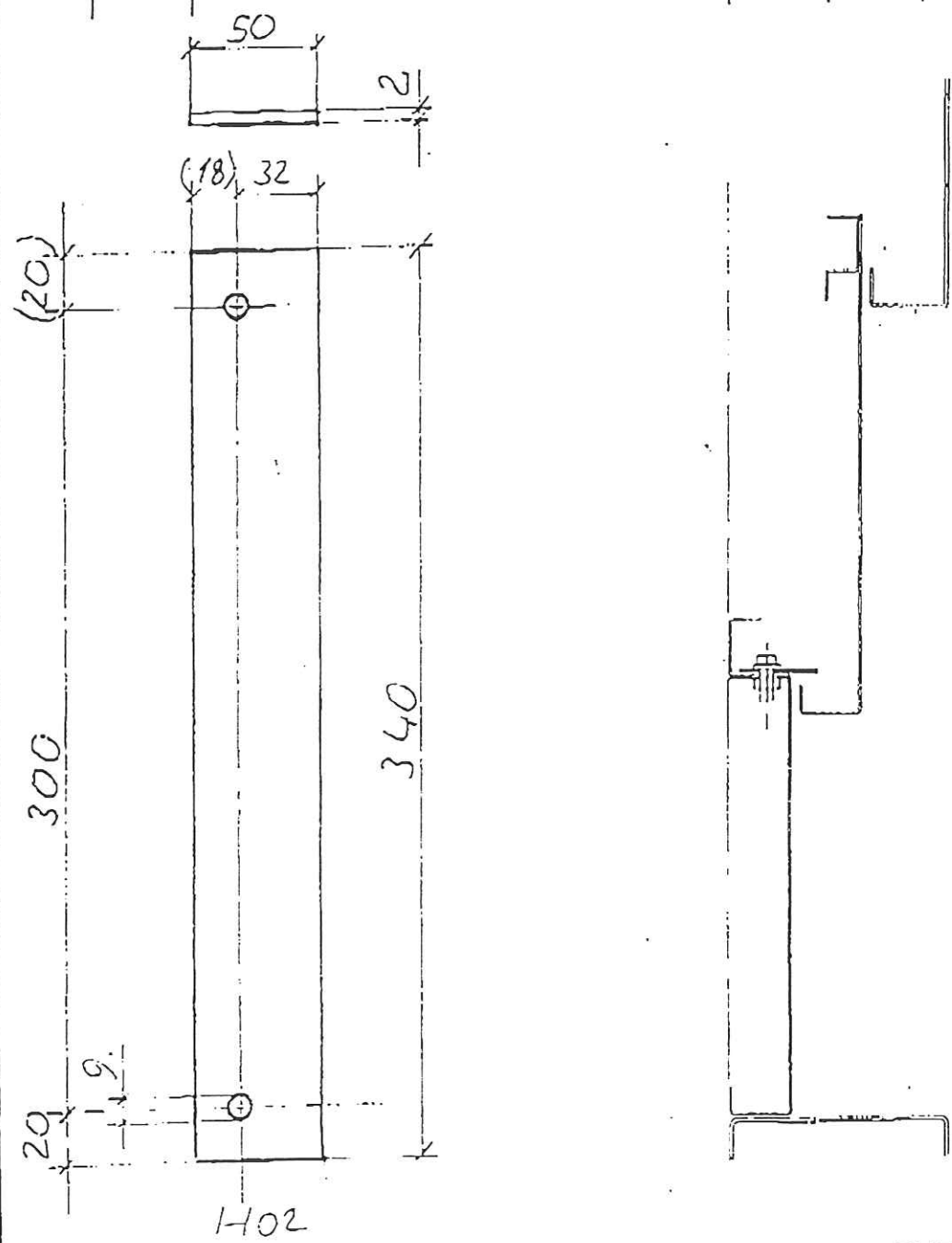


| POS. | PART NUMBER | DESCRIPTION       | REMARKS                    | A) | B) |
|------|-------------|-------------------|----------------------------|----|----|
| 1.   | 61579G01    | Lever             | for ADX2L                  | 1  | 1  |
|      | 61579G02    | Lever             | for ADX2R                  | 1  | 1  |
| 2.   | 61847H02    | Bearing           |                            | 2  |    |
| 3.   | 256514      | Canoe clip Form 1 | 354-0824-0000 FASTEX       | 2  |    |
| 4.   | 256546      | Bearing Form T    | 41/19/12,14,20,071 IGLIDUR | 2  |    |
| 5.   | 256517      | Buffer 4x15x60    | Teasmoll 700 white         | 1  |    |
| 6.   | 359391H03   | Roller            |                            | 2  | 2  |
| 7.   | 61536H02    | Distance washer   |                            | 2  |    |
| 8.   | 104489      | Locking ring      | 12x1 DIN471                | 2  |    |
| 9.   | 257005      | Pin               | LG 12x50 IT10              | 1  |    |
| 10.  | 61847H03    | Distance plate    |                            | 1  |    |
| 11.  | 60107G01    | Double nut        |                            | 1  |    |
| 12.  | 257161      | Spring            | 11x36 DIN7346              | 2  |    |
| 13.  | 249422      | Screw             | M8x60 DIN912               | 2  |    |
| 14.  | 257084      | Washer            | 12x18x1,2 DIN988           | 2  |    |

A) Number of parts in one assembly

B) Recommended number of stocked spare parts for 1...6 lifts

|                          |                 |                        |        |        |               |                 |              |                          |                  |
|--------------------------|-----------------|------------------------|--------|--------|---------------|-----------------|--------------|--------------------------|------------------|
| gehört zu<br>included in | 61 342          | 61 343                 | 61 347 | 61 348 | 61 352 / 353  |                 |              |                          |                  |
|                          | 61 362          | 61 363                 | 61 367 | 61 368 | 61 372 / 373  |                 |              |                          |                  |
| Ausgabe<br>Issue         | Index<br>Appear | Änderung<br>Alteration |        |        | Datum<br>Date | Gezeichn<br>Dwn | Gepr.<br>Chg | Zweit-Kopie<br>Twin copy | M-film<br>M-illm |



|                   |  |                |  |   |              |                                    |              |
|-------------------|--|----------------|--|---|--------------|------------------------------------|--------------|
| H02               |  | 2x50x340 Zinca |  |   |              | Gewicht<br>Weight                  |              |
| Teil<br>Item      |  | Typ<br>Type    |  | Materialabmessung und Qualität<br>Raw material dimensions and quality |              |                                    |              |
| Konstr.<br>Design |  | iischle        |  | Gepr.<br>Chg  | Gen.<br>Appd | Reg.<br>Sign                       | Code<br>Code |
| Gezeichn.<br>Dwn  |  | KF             |  | Safety plate  |              |                                    |              |
| Abteil.<br>Dept   |  | FA             |  | Zwangsmitnahme KAT teleskop   |              |                                    |              |
| Datum<br>Date     |  | 82-47          |  |   |              |                                    |              |
| KONE              |  |                |  |   |              | M-film<br>M-illr<br>Ausyu<br>Issue |              |
|                   |  | 61863          |  |   |              |                                    |              |