

# National Association of Lift Makers

# NALM

33/34 Devonshire Street London W1N 1RF

Director D M Fazakerley

telephone: 071-935 3013

fax: 071-935 3321

To: All Members  
cc: The Quality and Technical Committee (1719)

10th September 1993

Dear Sir,

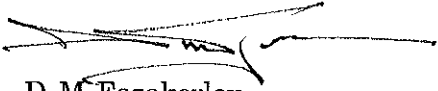
## **Wadsworth Type 72 Lock and Retractable Lock Beak**

I have received from Evans Lifts Ltd the enclosed instruction sheet concerning a safety problem with the above type lock and lock beak.

In the event members should find themselves involved with this type of equipment would they please be guided accordingly.

In the event any further information is required could I suggest you contact Mr Barrie Price, Operations Director at Evans Lifts Ltd, telephone 0533 662464, fax 0533 662318.

Yours faithfully,



D M Fazakerley  
Director

# QUALITY INSTRUCTION

No 95

PAGE 1 OF 1

Wadsworth Type 72 Lock and  
Retractable Lock Beak

CONCERNS SAFETY	YES	
	NO	

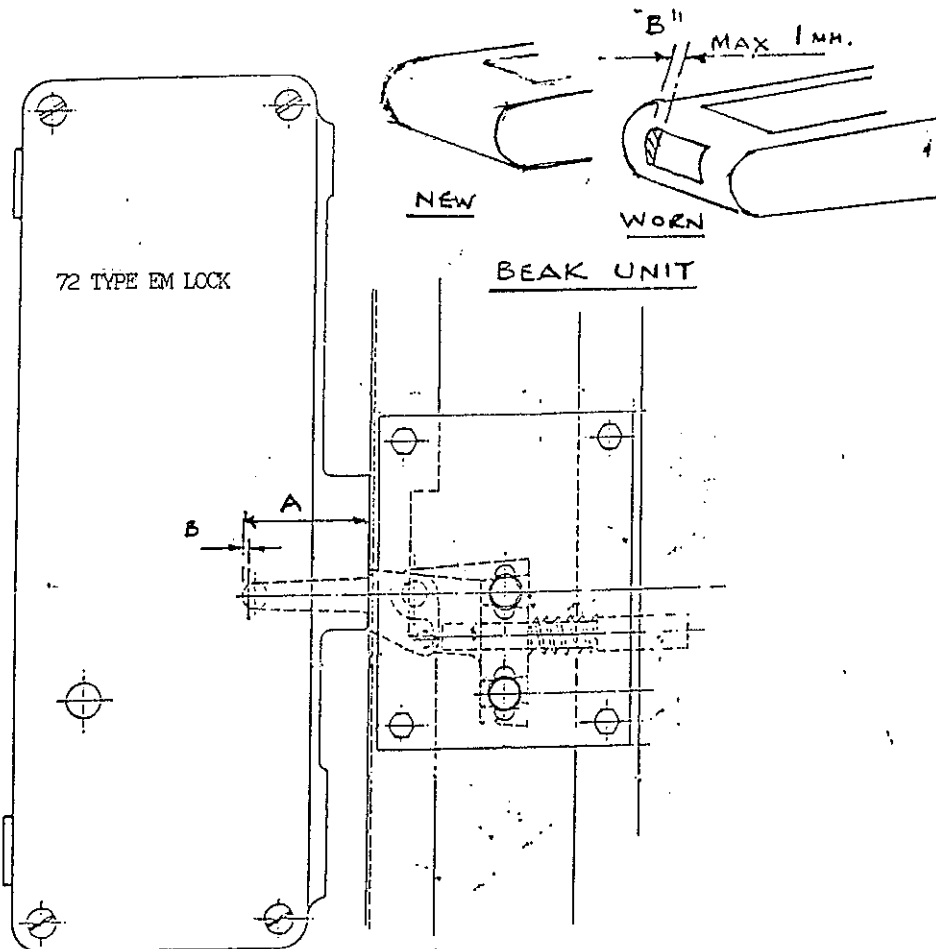
DATE 06-09-93

## SAFETY PROBLEM

We have had a recent incident due to combined wear on the Wadsworth Retractable Lock Beak and internal parts of the Wadsworth Type 72 lock. This resulted in the lock contacts making without the lock beak secured inside the lock, thus allowing the landing gate to be opened with the lift away from that floor level.

### Action

1. Examine the front face of the lock beak and if there is 1mm or more wear, on the face of the beak ('B' on sketch below) replace the beak assembly. Part number 76462-900.
2. Check from the face of the lock at beak entry point, the distance to the lock opening claw ('A' on sketch below). This dimension is 32mm when the lock is new and should this measure 34mm or more the lock is to be totally refurbished internally or completely replaced.
3. DANGER!! If the equipment is found to be outside the dimensional tolerances as described in this document, the lift should be removed from service.



ISSUED BY

*[Handwritten Signature]*