



Lift & Escalator Industry Association

33-34 Devonshire Street London W1G 6PY

Tel: 020 7935 3013 Fax: 020 7935 3321

E-mail: enquiries@leia.co.uk

Website: www.leia.co.uk

28 August 2009

To: All Members
Cc: Quality & Technical Committee (Code: 895)
The Safety and Environmental Committee

Dear Member

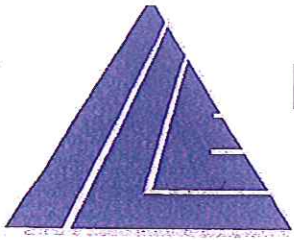
Re: GAL Two Panel Side Opening Landing Door Spring Closer

Please find attached information received from International Lift Equipment Ltd in connection with the above.

Yours sincerely

Gill Collins





International Lift Equipment Limited

LONDON OFFICE
UNITS 1 & 2 • HIGHAMS PARK INDUSTRIAL ESTATE
LARKSHALL ROAD • LONDON E4 7HS
TELEPHONE: 020 8527 9669 • FAX: 020 8527 9255

MIDLAND OFFICE
WANLIP ROAD • SYSTON
LEICESTER LE7 1PD
TELEPHONE: 0116 269 0900 • FAX: 0116 269 0939

Lift and Escalator Industry Association
33-34 Devonshire Street
London
W1G 6PY

30th July 2009

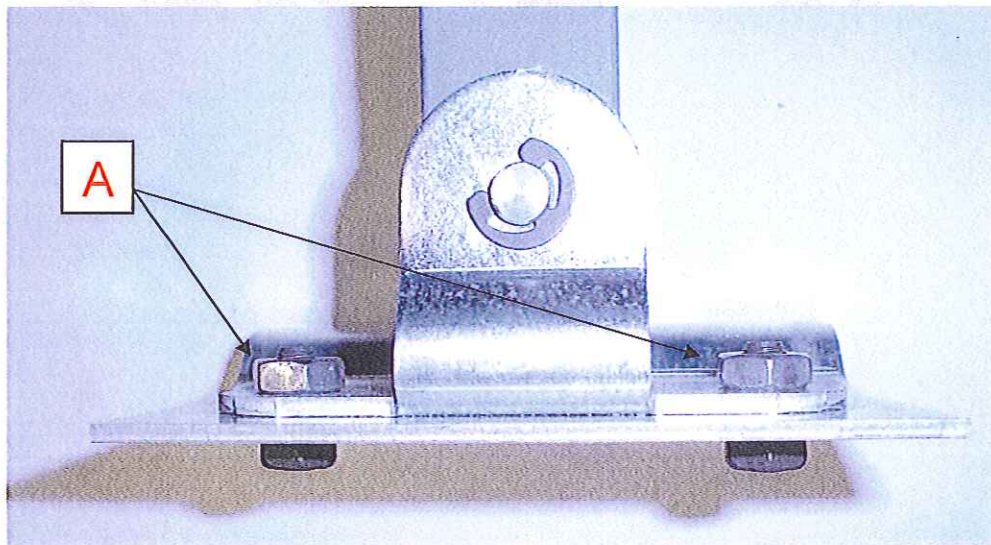
Attention: Mr. Derek Smith

Dear Mr. Smith,

SAFETY BULLETIN

RE: GAL Two Panel Side Opening Landing Door Landing Door Spring Closer

We have been advised by one of our clients of an incident that took place with the GAL two panel landing door spring closer. The problem arose from a failure of the fixings for the slow door link bracket to the slow door mounting plate and the fixings between the slow door mounting plate and the slow door. The fixing Sems screws (A) have been used since 1999. GAL confirms that there have been no similar incidents reported in their world wide sales in this ten year period. However they have taken our report which indicates that in this installation the Sems screws have become loose creating a potential hazard if the slow door is not picked up and driven by the fast door. The GAL interlock device creates a safety net for this but on this occasion had not been fitted.



In the event GAL have advised that fixings should be torqued up to 27.2 Nm (20ft/lbs) at time of installation. It is advisable that these fixings should be checked for torque value every 12 months. As a further precaution GAL have advised that as of October 1st 2009 fixing nuts are changing to a nylok type. This has no impact on cost or production to GAL who have offered this as a further safety net.

Yours faithfully

David Daniell

Engineering Manager

