

National Association of Lift Makers

33/34 Devonshire Street London W1N 1RF

Director D M Fazakerley

NALM

telephone: 0171-935 3013

fax: 0171-935 3321

To: All Members
cc: The Quality and Technical Committee (1971)

12 January 1996


Dear Sir,

Kone ADX2 Car Doors, Safety Note SN 03.13.03

I enclose safety information received from Kone Lifts Ltd which I trust, where appropriate, will prove self explanatory.

Will members please be guided accordingly.

Yours faithfully,



D M Fazakerley
Director

KONE LIFTS LTD	Subject				CODE: SN 03.13.03
	<u>ADX2 (2 Panel Side Opening Car Doors)</u> <u>Synchronisation Lever Fault.</u>				Page 1 of 4 SAFETY CATEGORY A
DEPT. TECH.SUPP	DATE 8.1.96	COMPILED BY A J Shiner	CHECKED A J Shiner	APPROVED <i>AJS</i>	ISSUE A

1. Introduction

- 1.1 A fault has been found on ADX car doors manufactured before January 1993. Doors manufactured after January 1993 have the synchronisation lever pivot pin secured by welding.
- 1.2 The pivot shaft (Component 9 on the attached drawings) may come out of it's housing and then the door synchronisation rollers can slip out of the guides. The lever is then unguided and can come into contact with the lift doors and front wall of the well.
- 1.3 These doors have been supplied with Kone CMX and Ceser Model lifts.

2. Corrective Action

- 2.1 During the next service visit latest, inspect the pivot shaft of the synchronisation lever.
- 2.2. If the pivot shaft is loose or missing then secure the lever temporarily with an M4 bolt fitted with spring washer and securing nut. Replace the lever with a new unit which is obtainable from:-

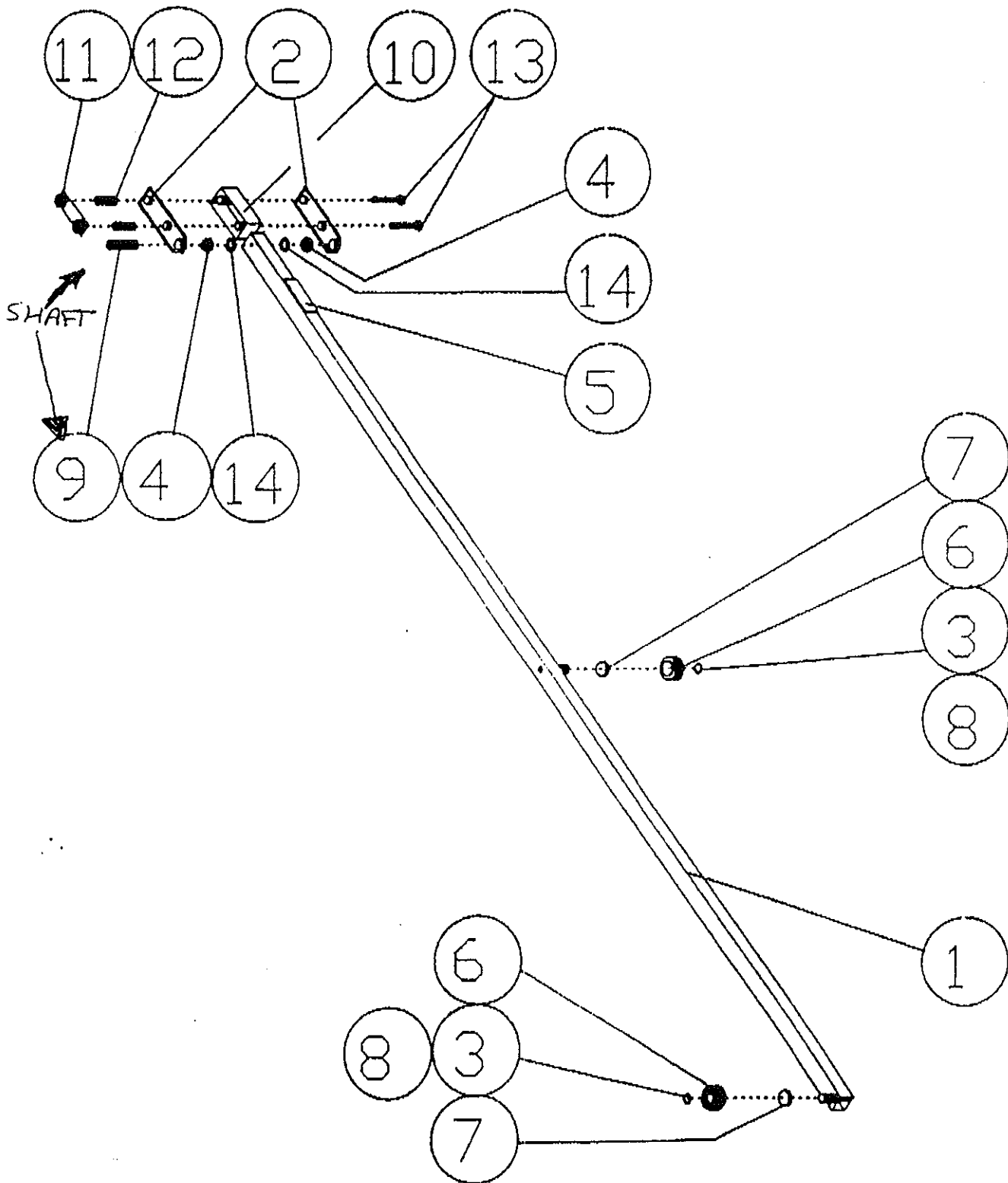
Kone Lifts Stores Department
168-170 Wellington Road South
Hounslow
Middx
TW4 5JN

- 2.3 Left hand door Lever Part Number: 61527G13
Right hand door Lever Part Number: 61527G14

Note: View from Landing.

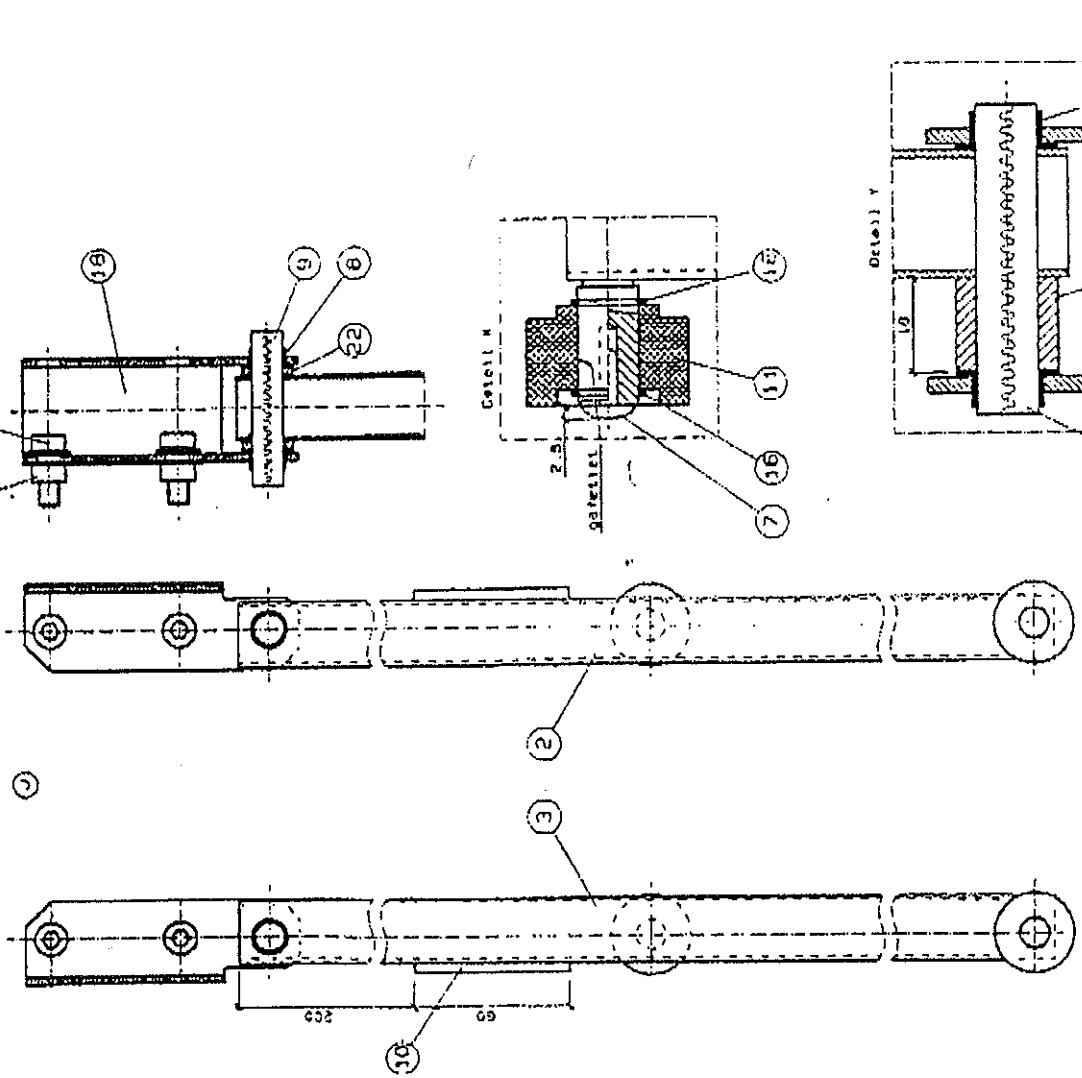
- 2.4 Report details of modified Lift and Site to the Engineering Support Department at Hounslow.

ADX2L SYNCRONISATION LEVER 61527G13
ADX2R SYNCRONISATION LEVER 61527G14



Item No.	Part Name	Material	Qty	Unit	Remarks
1
2
3
4
5
6
7
8
9
10
11
12
13
14
15
16
17
18
19
20
21
22
23
24

Achtung: Diese Zeichnung ist Bestandteil der Verriegelungs-Zubehörung und darf nur nach Rücksprache mit dem IÖV-Süwest gefertigt werden!

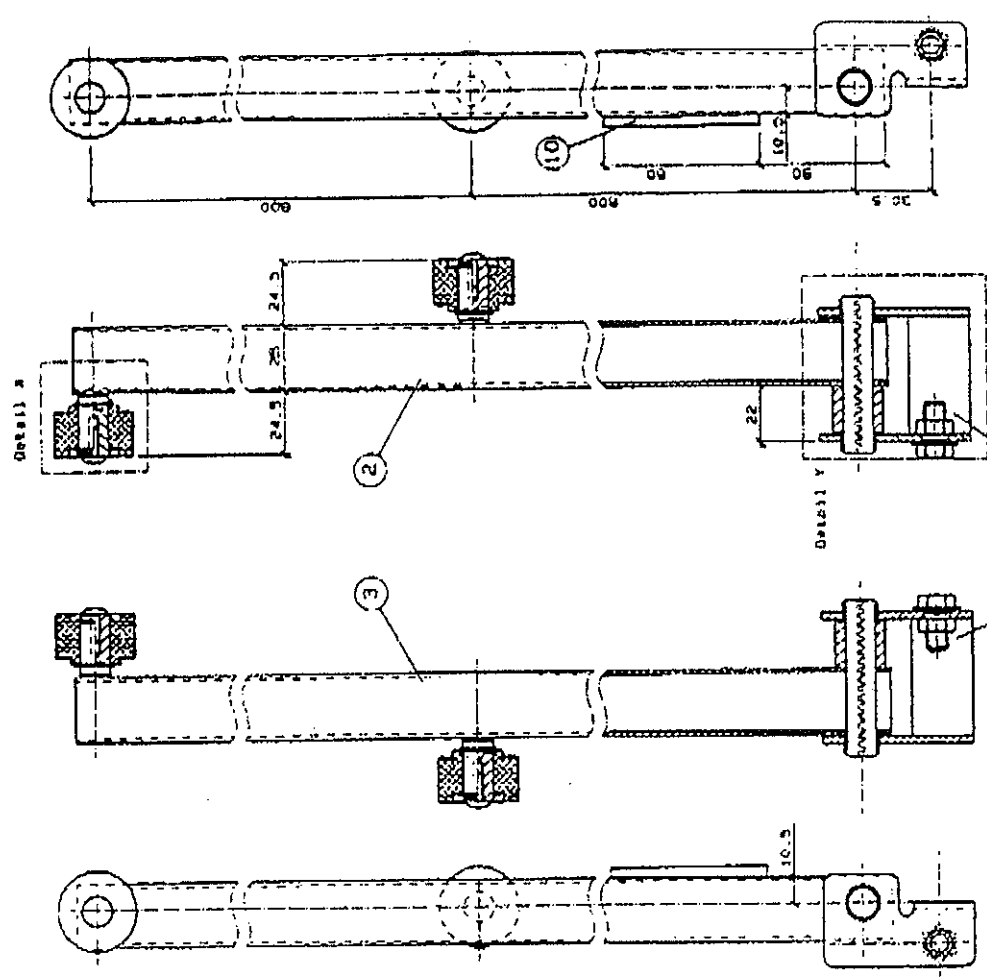


G 23

Landung Door left hand opening
 SAT nach links Öffnung

G 24

Landung Door right hand opening
 SAT nach rechts Öffnung



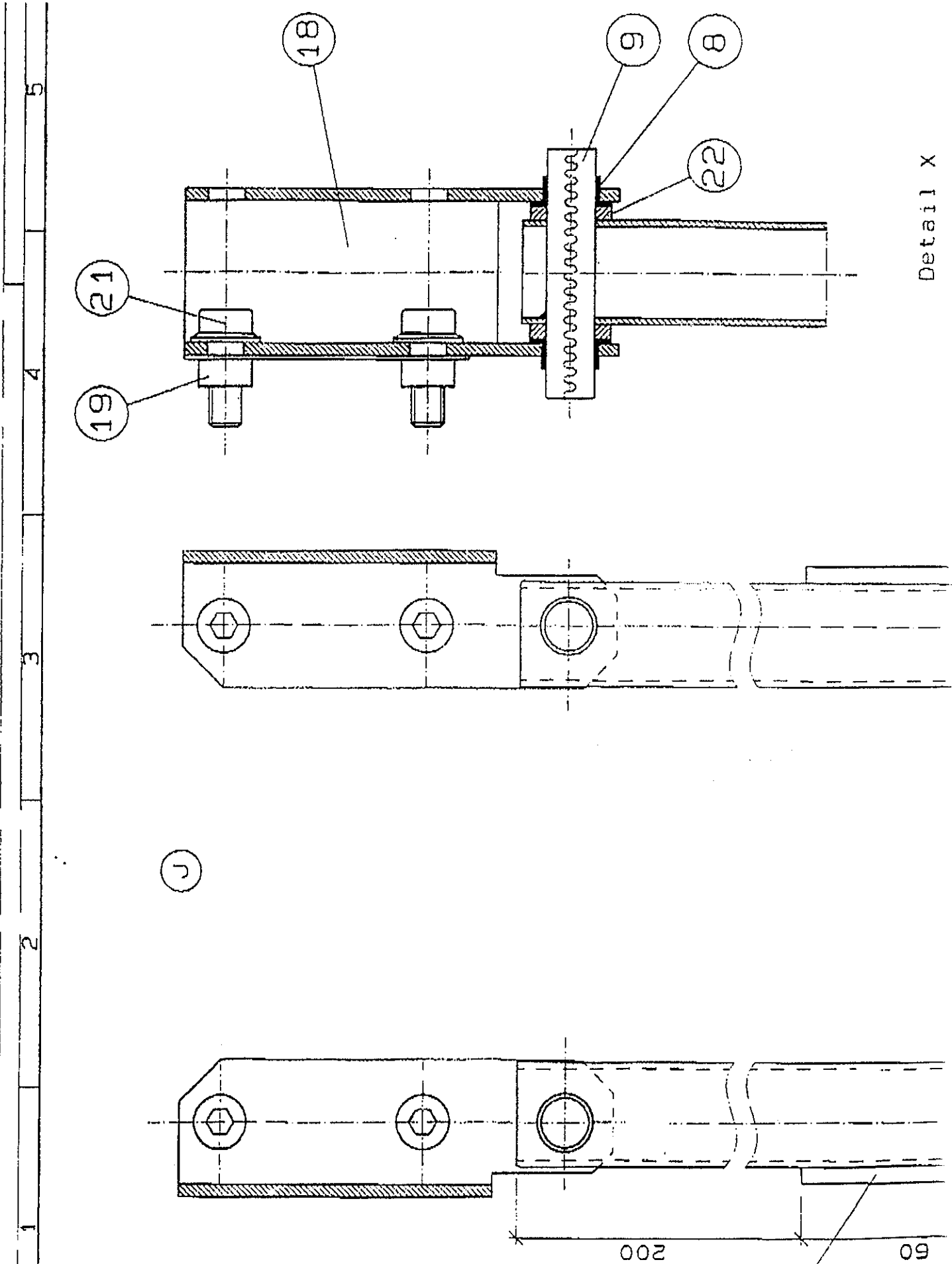
G 13

Car Door left hand opening
 SAT nach links Öffnung

G 14

Car Door right hand opening
 SAT nach rechts Öffnung

FISCHLE
 Synchronisation Lower complete
 Synchronisations-hebel vollst. ...



Detail X