



Lift & Escalator Industry Association

33-34 Devonshire Street London W1G 6PY

Tel: 020 7935 3013 Fax: 020 7935 3321

E-mail: enquiries@leia.co.uk

Website: www.leia.co.uk

22 January 2010

To: All Members

Dear Member

STANNAH LIFTS LTD – MRLi – HYDRAULIC PASSENGER LIFT

We sent a safety notice out on their behalf in 2009 concerning the Stannah MRLi Hydraulic Passenger Lift - Installation of Pawl device –Prevention of Unintended Movement.

Stannah now wish us to issue another notice on – Stannah MRLi Hydraulic Passenger Lift – Replacement of down pivot valve (Ref “VMD”), so please find copies of both safety notices for your information.

Yours faithfully

Derek Smith
Technical Director

STANNAH LIFTS LTD

TECHNICAL BULLETIN**SAFETY ISSUE**

For the Attention of : LEIA, SAFED, Stannah Trade Customers,
Stannah Service Branches

Date : 13-08-2009

Product : Stannah MRLi - Hydraulic Passenger Lift

Subject : Installation of Pawl device - Prevention of Unintended Movement

Pages : 2

Originator : Stannah Lifts Ltd, Anton Mill, Andover, Hants SP10 2NX 01264 339090

Background

Stannah Lifts have experienced a small number of failures of the down hydraulic circuit on the Stannah MRLi hydraulic passenger lift product. The MRLi product has the hydraulic power pack (tank) located within the lift pit. This type of failure results in an unintended descent of the lift.

The current hydraulic equipment used on this product meets all of the requirements of EN81-2. *Note: a proposed Amendment A3 to EN81-2 is being progressed by the CEN/TC10 Technical Committee which will require and specify additional requirements to that currently detailed.*

Issue

A number of measures are already provided as standard to substantially reduce the risks of injury during failure of the down hydraulic circuit.

Whilst the likelihood of these failures is very small, risk assessment has shown that a small residual risk is present. To remove this residual risk and to improve safety and prevent any form of unintended descent Stannah Lifts have developed a Pawl device. This device completely eliminates the residual risks.

The Pawl device can only be retrofitted to MRLi models that incorporate instantaneous safety gear. This represents the vast majority of units installed in the field.

Note: A few MRLi models were equipped with progressive safety gear or with no safety gear – these units must also be fitted with alternative means to reduce the risk. Stannah Lifts will provide an auxiliary check valve and instructions for such installations.



Action required by you:

All MRLi models with instantaneous safety gear must be fitted with the Stannah Lifts Pawl device.

MRLi models with progressive safety gear or no safety gear must be fitted with an auxiliary check valve.

Materials and a sequence of work to undertake these product improvements are made available free of charge from Stannah Lifts Ltd.

Contacts:

To request materials please contact: Alison Gamble

E-mail: alison_gamble@stannah.co.uk

Tel: 01264 343632

For technical assistance please contact: Richard Christopher

E-mail: richard_christopher@stannah.co.uk

Tel: 01264 343652

Technical bulletin approved by: Paul Clifton, Engineering Director

E-mail: paul_clifton@stannah.co.uk

Tel: 01264 343604

TECHNICAL BULLETIN**SAFETY ISSUE**

For the Attention of : LEIA, SAFED, Stannah Trade Customers

Date : 4-1-2010

Product : Stannah MRLi - Hydraulic Passenger Lift

Subject : Replacement of down pilot valve (Ref "VMD")

Pages : 3

Originator : Stannah Lifts Ltd, Anton Mill, Andover, Hants SP10 2NX 01264 339090

Background

Following the issue of Stannah Technical Bulletin TB82 on 13/8/2009 (regarding the fitting of pawl devices on Stannah MRLi's) a review has determined that the rate of progress of the installation of these pawl devices is slow. Therefore, Stannah Lifts Ltd are proposing an additional measure (to reduce the probability of any further valve failures) to run alongside the pawl device retrofit programme.

Issue

Subsequent inspection of valves has established that all valve failures to date have been of an older version of the down pilot valve (Ref "VMD"). In order to reduce the probability of any further valve failures, Stannah Lifts Ltd request that all older versions of VMD are replaced with the new version. The old version was present on all MRLi power units manufactured up until January 2008. Those MRLi power units already equipped with the latest version VMD do not require a valve change.

New VMD valves will be supplied free of charge with all necessary fitting instructions. We recommend that replacement should be undertaken before or at the next scheduled service interval. This operation takes approximately 5 to 10 minutes.

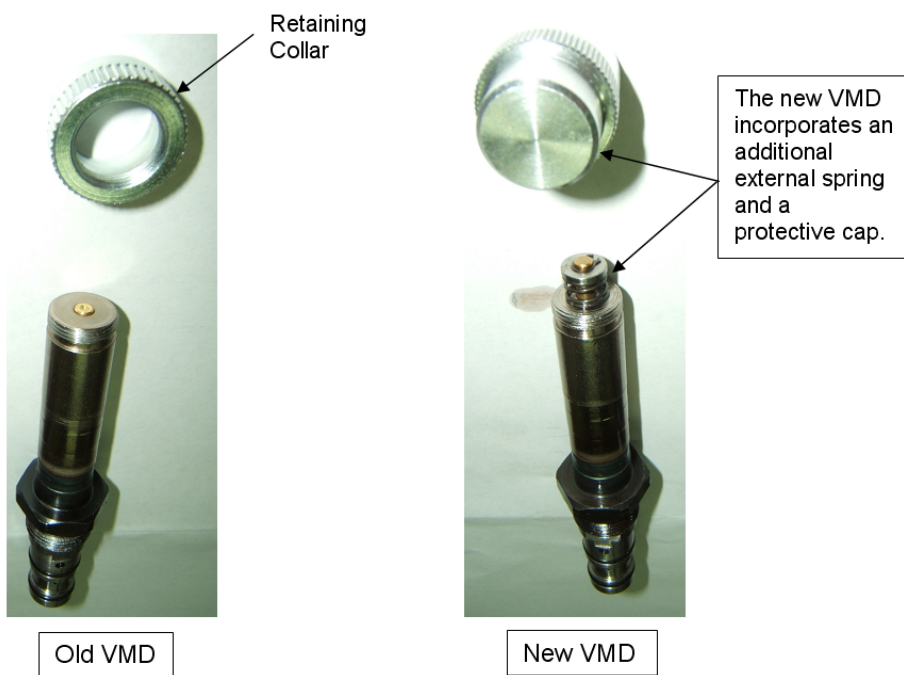
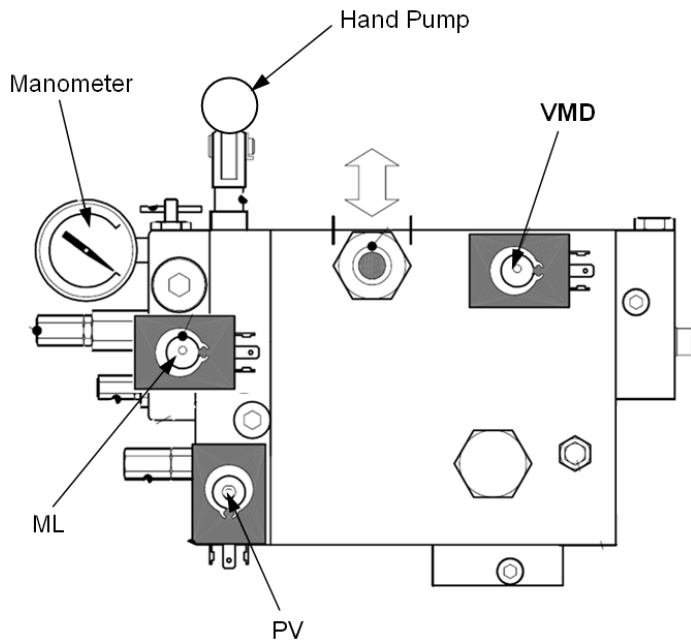
Fitting of this new VMD valve reduces the probability of failure, but does not completely remove the need for fitting a pawl device as requested in Technical Bulletin TB82. The advantage of this proposed action is that it can be completed very easily during a routine site visit, whilst the Pawl device as described and requested in bulletin TB82, is recognised as being a more involved modification.

Action required by you:

- All MRLi models with the old version VMD are to have the newer version VMD fitted before or at the next scheduled service interval.
- Continue to actively progress the action points of bulletin TB82 (fitting of pawl devices etc).

Materials and a sequence of work to undertake these product improvements are made available free of charge from Stannah Lifts Ltd. (*For contacts see page 3*).

Identification of VMD:





Contacts:

To request materials please contact: Alison Gamble

E-mail: alison_gamble@stannah.co.uk

Tel: 01264 343632

For technical assistance please contact: Richard Christopher

E-mail: richard_christopher@stannah.co.uk

Tel: 01264 343652

Technical bulletin approved by: Paul Clifton, Engineering Director

E-mail: paul_clifton@stannah.co.uk

Tel: 01264 343604