



Lift & Escalator Industry Association

33-34 Devonshire Street London W1G 6PY

Tel: 020 7935 3013 Fax: 020 7935 3321

E-mail: enquiries@leia.co.uk

Website: www.leia.co.uk

5 July 2010

To: All Members
cc: SAFed

Dear Member

**Stannah Safety Bulletin – TB 97 Updated advice
re: Pawl device & replacement VMD Valves**

Please find attached another safety bulletin from Stannah which follows their previous bulletins of TB82 - August 2009 and TB92 - January 2010.

Please do not hesitate to contact the LEIA office if we can be of further assistance.

Yours faithfully

Derek Smith
Technical Director



EMTA Awards Limited
Approved Assessment Centre

ELA Member of the
European Lift Association



Registered in England N° 3851206.
Registered office as above.



Certificate N° 12368

TECHNICAL BULLETIN

SAFETY ISSUE

For the Attention of : LEIA, SAFED

Date : 29-6-2010

Product : Stannah MRLi - Hydraulic Passenger Lift

Subject : **Updated advice** - Pawl device and replacement down pilot valves

Pages : 4

Originator : Stannah Lifts Ltd, Anton Mill, Andover, Hants SP10 2NX 01264 339090

Background

Stannah have issued 2 previous bulletins on this issue:

- TB82 ...Uncontrolled descent due to failure of the VMD, issued on 13-08-2009. This recommended the fitting of a pawl device to reduce the risk of uncontrolled descent if a failure of VMD were to occur.
- and
- TB 92 ... Replacement of Down Pilot Valve (ref. VMD), issued on 04-01-2010. This recommended the upgrade of VMD to a newer type and to progress the pawl device fitting etc as per TB82.

We have found that the take up of the fitting of the pawl device by servicing companies has been extremely slow. When the pawl device was first made available it was not clear at that time whether the new down pilot valve would exhibit a higher reliability than its predecessor. We now have more extensive experience of the new design VMD and a greater confidence in its improved reliability.

This new bulletin to the industry reflects this.

Issue

We continue to strongly recommend and encourage the fitting of the pawl device, as we know this type of device has been included within the recently published A3 amendment of EN81-2 which becomes effective in May 2011. This means it will eventually become the state of art, but we acknowledge that the requirement is not retrospective. Materials and instructions continue to be supplied free of charge. Installation cost is borne by the installing company.

By way of this bulletin we want to emphasise the importance of fitting the new design VMD, such that the valve upgrade must take place. New VMD valves are supplied free of charge with all necessary fitting instructions. Replacement should be undertaken before or at the next scheduled service interval. **This operation takes approximately 5 to 10 minutes.**

Those MRLi power units already equipped with the latest version VMD do not require a valve change. Appendix A lists contract numbers of those lifts recorded as requiring the VMD change.

Action required by you:

- All MRLi models with the old version VMD are to have the newer version VMD fitted before or at the next scheduled service interval.
- Action points of bulletin TB82 (fitting of pawl devices etc) are to be progressed for cases where additional safety, over and above requirements of EN81-2, is desired.

Materials and a sequence of work to undertake these product improvements are made available free of charge from Stannah Lifts Ltd. (*For contacts see page 3*).

Identification of VMD:

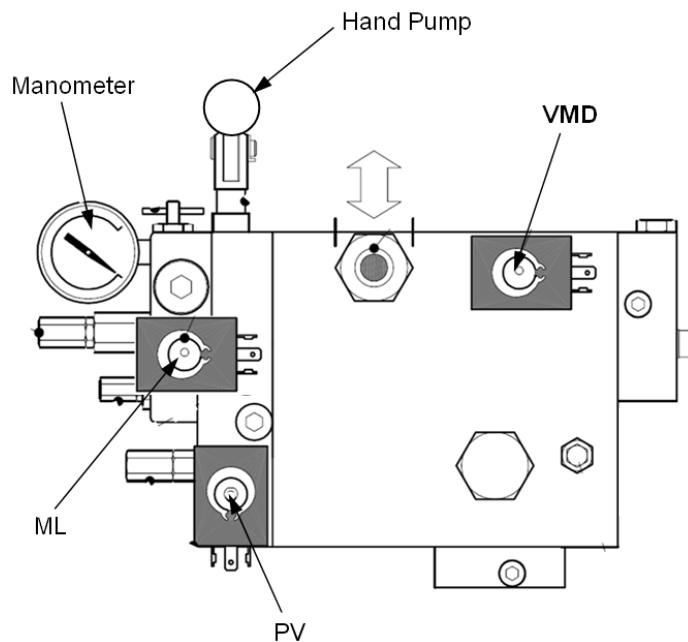


Figure 1 - Location of VMD

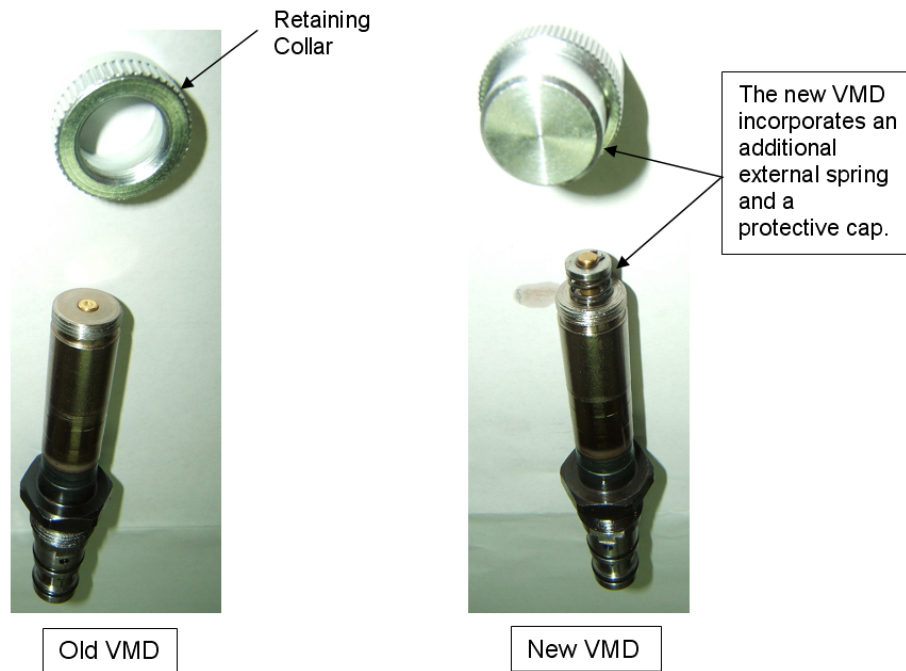


Figure 2 - Distinguishing features of old and new VMD valves

Contacts:

To request materials please contact: Alison Gamble

E-mail: alison_gamble@stannah.co.uk

Tel: 01264 343632

For technical assistance please contact: Richard Christopher

E-mail: richard_christopher@stannah.co.uk

Tel: 01264 343652

Technical bulletin approved by:

Paul Clifton, Engineering Director

E-mail: paul_clifton@stannah.co.uk

Tel: 01264 343604

Appendix A – List of lifts requiring VMD change

This list captures the vast majority of lifts with the old style VMD but it is not definitive. Therefore, servicing companies should inspect all MRLi's at the next scheduled service visit to capture any old VMD's that may not appear on this list.

Contract Reference (series 25xxxx)		Contract Reference (series 26xxxx)		Contract Reference (series 26xxxx continued)		Contract Reference (series 27xxxx)	
Prefix	Number	Prefix	Number	Prefix	Number	Prefix	Number
LC	250141	LC	260002	LC	260251	LC	270011
LC	250161	LC	260006	LC	260263	LC	270016
LC	250184	LC	260015	LC	260264	LC	270050
LC	250254	LC	260027	LC	260274	LC	270057
LC	250270	LC	260033	LC	260275	LC	270072
LC	250291	LC	260034	LC	260279	LC	270085
LC	250297	LC	260040	LC	260283	LC	270089
LC	250302	LC	260048	LC	260286	LC	270090
LC	250305	LC	260055	LC	260291	LC	270096
LC	250314	LC	260081	LC	260308	LC	270101
LC	250316	LC	260088	LC	260319	LC	270103
LC	250317	LC	260092	LC	260325	LC	270124
LC	250321	LC	260099	LC	260338	LC	270127
LC	250344	LC	260100	LC	260339	LC	270137
LC	250345	LC	260125	LC	260352	LC	270141
LC	250350	LC	260131	LC	260362	LC	270142
LC	250353	LC	260134	LC	260363	LC	270153
LC	250387	LR	260160	LC	260384	LC	270191
LC	250397	LC	260192	LC	260386	LC	270210
LC	250398	LC	260193	LC	260389	LC	270223
LC	250399	LC	260194	LC	260390	LC	270263
LC	250404	LC	260198	LC	260395	LC	270264
LC	250406	LC	260201	LC	260403		
LC	250408	LC	260202	LC	260405		
LC	250409	LC	260232	LC	260406		
LC	250410	LC	260233				
LC	250445	LC	260238				
LC	250446	LC	260239				
LC	250457	LC	260241				
LC	250469	LC	260245				