

Schindler Ltd.
Field Quality & Excellence



Schindler Ltd, Benwell House, Green Street, Sunbury-on-Thames, Middlesex. TW16 6QT

Lift & Escalator Industry Association
Mr. Terry Potter
33 - 34 Devonshire Street
London
W1N 1RF

From Steven Reynolds
Telephone 01932 758 100
E-mail tech.support@gb.schindler.com
Reference no. FI 379/IG/FL
Date 04/07/2011
Subject **Schindler Smart MRL: Potential Problem with Counterweight Upper Yoke**

Dear Mr. Potter

We have identified a potential problem on selected Schindler Smart MRL installations. Some sizes of counterweight frame may experience cracks and tears where the uprights are attached to the upper yoke, potentially leading to a mechanical failure of the upper yoke.

The problem concerns counterweight frames on Schindler Smart MRL lifts with rated loads of 320, 450 and 630 Kg manufactured before Feb. 2001, i.e. counterweight frames with no reinforcement welding on the upper yoke. The corrective action recommended by Schindler Ltd requires the installation of a reinforcement kit on the effected counterweights.

We would ask you to inform all your members of this potential problem and ask them to check for damage in line with the enclosed instruction. For all affected counterweight frames reinforcement kits are available from Schindler Ltd.

Continued:

Registered in England 662746
Registered office:
Benwell House
Green Street
Sunbury-on-Thames
Middlesex TW16 6QT

Tel. +44 (0)1932 758100
Fax +44 (0)1932 758258
info@gb.schindler.com
www.schindlerlifts.co.uk

Schindler Ltd.
Field Quality & Excellence



Date 04/07/2011
Page 2
Subject **Schindler Smart MRL: Problems With Counterweight Top Yoke**

Should you have any questions on this matter please contact our hotline on 01932 758 236 or via the above email address.

Yours faithfully
Schindler Ltd.

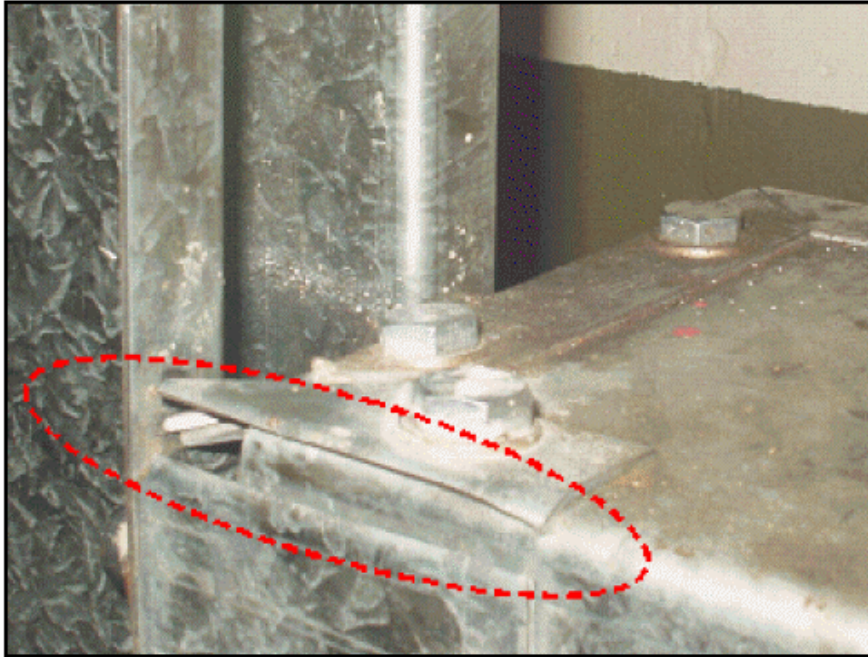
Steven Reynolds
Technical Manager

Enclosed:
FI 379 Schindler Smart MRL Counterweight: Inspection Instruction
FI 379 Schindler Smart MRL Counterweight: Reporting Form

1) Potential Problem:

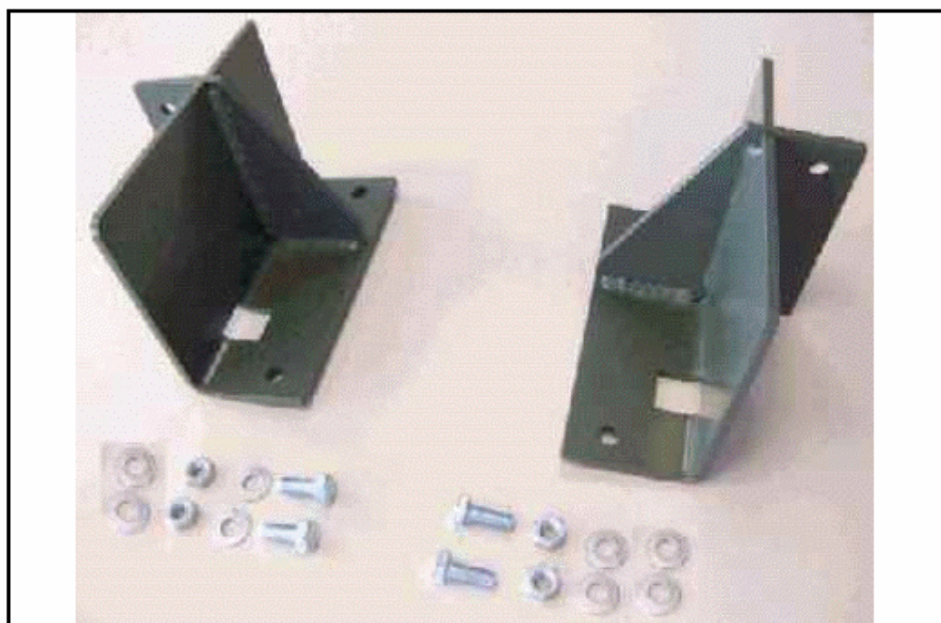
We have identified a potential problem with the counterweight frames on Schindler Smart MRL lifts with rated loads of 320, 450 and 630 Kg manufactured before Feb. 2001, i.e. counterweight frames with no reinforcement welding on the upper yoke.

Some of these counterweight frames may experience cracks and tears where the uprights are attached to the upper yoke, potentially leading to a mechanical failure of the upper yoke.



2) Solution

Check all relevant counterweight frames for cracks and tears where the uprights are attached to the upper yoke. Request a reinforcement kit (below) and installation instructions for all affected installations (regardless of whether cracks or tears are found) by completing and returning the enclosed reporting form to Schindler Ltd.



1. Site Details

Site Address:	
Schindler Lift No:	
Customers Reference:	

2. Lift Information

Rated Load:	
-------------	--

3. Counterweight Information

Are cracks or tears visible where the uprights attach to the upper yoke?	
--	--

4. Delivery Details

Name:	
Company:	
Company Address:	
Delivery Address: (if different)	
Contact Phone No.	

Please Return Completed Form to:

Schindler Ltd.

Technical Department

Benwell House

Green Street

Sunbury-on-Thames

Middlesex TW16 6QT

Tel: 01932 758 100

Fax: 01932 758 258

Email: tech.support@gb.schindler.com