

National Association of Lift Makers

NALM

33/34 Devonshire Street London W1N 1RF

Director D M Fazakerley

telephone: 071-935 3013

fax: 071-935 3321

To: All Members

20th May 1993


Dear Sir,

Wadsworth Locks, Safety Problem

I enclose two Quality Instruction sheets received from Evans Lifts Ltd which relate to Wadsworth locks of the type specified.

Should companies have experience of this type of equipment will they please be guided accordingly.

Yours faithfully,



D M Fazakerley
Director

cc The BLA

Wadsworth Type EM72 Locks
Safety Problem

CONCERNS
SAFETY

YES
NO



An incident has occurred where part of the internal assembly of a Wadsworth EM72 lock became loose and shorted out the pre-lock door contacts and at the same time jamming the mechanical operation of the lock. This allowed the landing door to be opened when the lift was not there. The locks were manufactured by Wadsworth during the years 1972 up until 1981 at which time the design was modified.

The original design had spring guides made of plastic that were fixed into the moving contact block using adhesive. Over the years the adhesive has become ineffective allowing the plastic guide to come out of its housing and thus allow one or both of the springs to float freely in the lock. Later locks had the spring guides mechanically pinned to retain them.

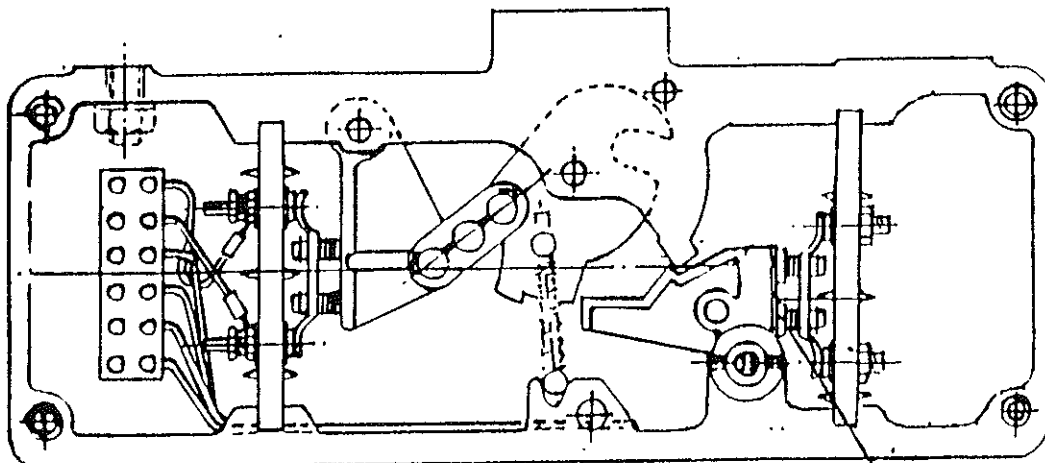
In view of the age of the lock and the inevitable wear of some of the other internal parts of the lock it is recommended that this type of lock is now replaced by a new or reconditioned lock of a similar design but with mechanically secured spring guides.

Action :

When it has been commercially agreed that the locks on a site are to be changed, reconditioned locks can be obtained from Evans with Part No. SEE BELOW

NOTE : A reconditioned lock cannot be fitted if there is excessive wear or damage to the lock casting.

NOTE : IF A RECONDITIONED LOCK IS FITTED THE OLD LOCK MUST BE RETURNED TO EVANS AT LEICESTER.



TYPE A ASSEMBLY SHOWN - CODE 76516.210

TYPE B ASSEMBLY = OPPOSITE HAND
CODE 76516-220

PLASTIC SPRING
GUIDES.

ISSUED BY

[Handwritten signature]

Wadsworth Retractable Lock
Beak Safety Problem

CONCERNS
SAFETY

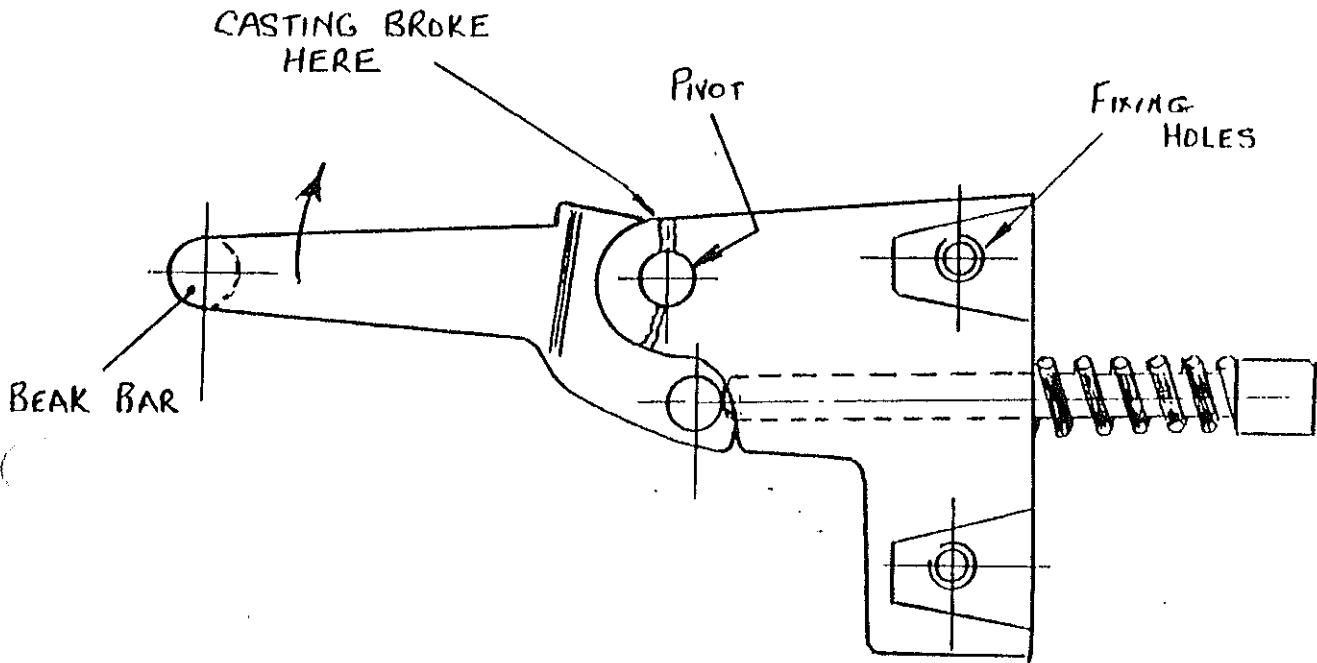
YES
NO

DATE 3-5-93

We have had 2 recent incidents where the casting that holds the pivot shaft of a Wadsworth Retractable Lock Beak has broken leaving the beak still correctly positioned within the landing door lock but allowing the landing door to be manually opened without the lift being there. This, of course, allows the lift to run with the landing door open resulting in a very dangerous condition. These lock beaks have been used on Wadsworth Lifts for many years and have been used on most of the Wadsworth manually operated doors during this time.

Action :

It is recommended that any Wadsworth lift that is fitted with this type of retractable lock beak has the assembly changed for a new replacement unit. New units now have castings manufactured from a spheroidal cast iron giving superior strength and resistance to shock and are finished in red lead oxide paint for easy identification purposes. This assembly can be obtained from Evans at Leicester, Part No. 76462-900.



ISSUED BY

[Signature]
I.G. Jones