



Lift and Escalator Industry Association

33-34 Devonshire Street London W1G 6PY
Tel: 020 7935 3013 Fax: 020 7935 3321

E-mail: leia.enquiries@virginnet.co.uk
Website: www.leia.co.uk

29th September 2000

To: All members
cc: The Quality and Technical Committee (Code No. 369)

Dear Sir/Madam,

TECHNICAL BULLETIN : BISON BEDE LTD.

Please find enclosed Technical Bulletin from Bison Bede Ltd. in connection with a potential problem which may exist with some Stand/Perch Stairlifts and Stairlifts used in conjunction with a Bridging Platform.

Would members please be guided accordingly.

Yours faithfully

Robert N Lee
Director, Technical Services



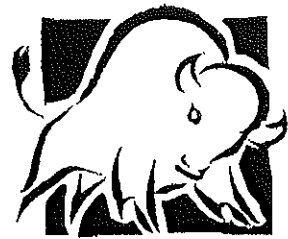
EMTA Awards Limited
Approved Assessment Centre



A company limited by guarantee.
Registered in England N° 3851206. Registered office as above.



Certificate N° 42056109



**BISON
BEDE
LIMITED**

Castleside Industrial Estate
Consett, County Durham
DH18 8JB
Telephone: (01207) 585000
Facsimile: (01207) 585085

Bison Bede Ltd have identified a potential problem, which may exist with some Stand/Perch Stairlifts and Stairlifts used in conjunction with a Bridging Platform.

This potential issue involves lifts manufactured between August 1992 and June 1999.

It does not affect any other products.

Trading standards have been consulted and an appropriate action plan agreed.

This action has been implemented and is ongoing at this time.

We are contacting clients directly to arrange inspections/upgrades as appropriate.

We are in the process of tracing lifts sold to dealers.

However in order that we identify and modify as many lifts with this potential problem, as is reasonably practicable, we would ask that LEIA circulates the attached Technical Bulletin to all members.

Duncan Dando
Quality Manager

WHERE CARING COUNTS

Registered Office:
Castleside Industrial Estate
Consett, County Durham DH18 8JB
Registered in England
No. 3600400



TECHNICAL BULLETIN

Applications involved.

This modification only applies to Stand / Perch type lifts, and any lift used in conjunction with a Bridging Platform.

Chassis Plate modification

Ref. Footrest fixing support boss Bison Bede Classic Straight Stairlift

Further to our recent telephone conversations please find attached as pages 3 and 4, schematic views, of the affected part.

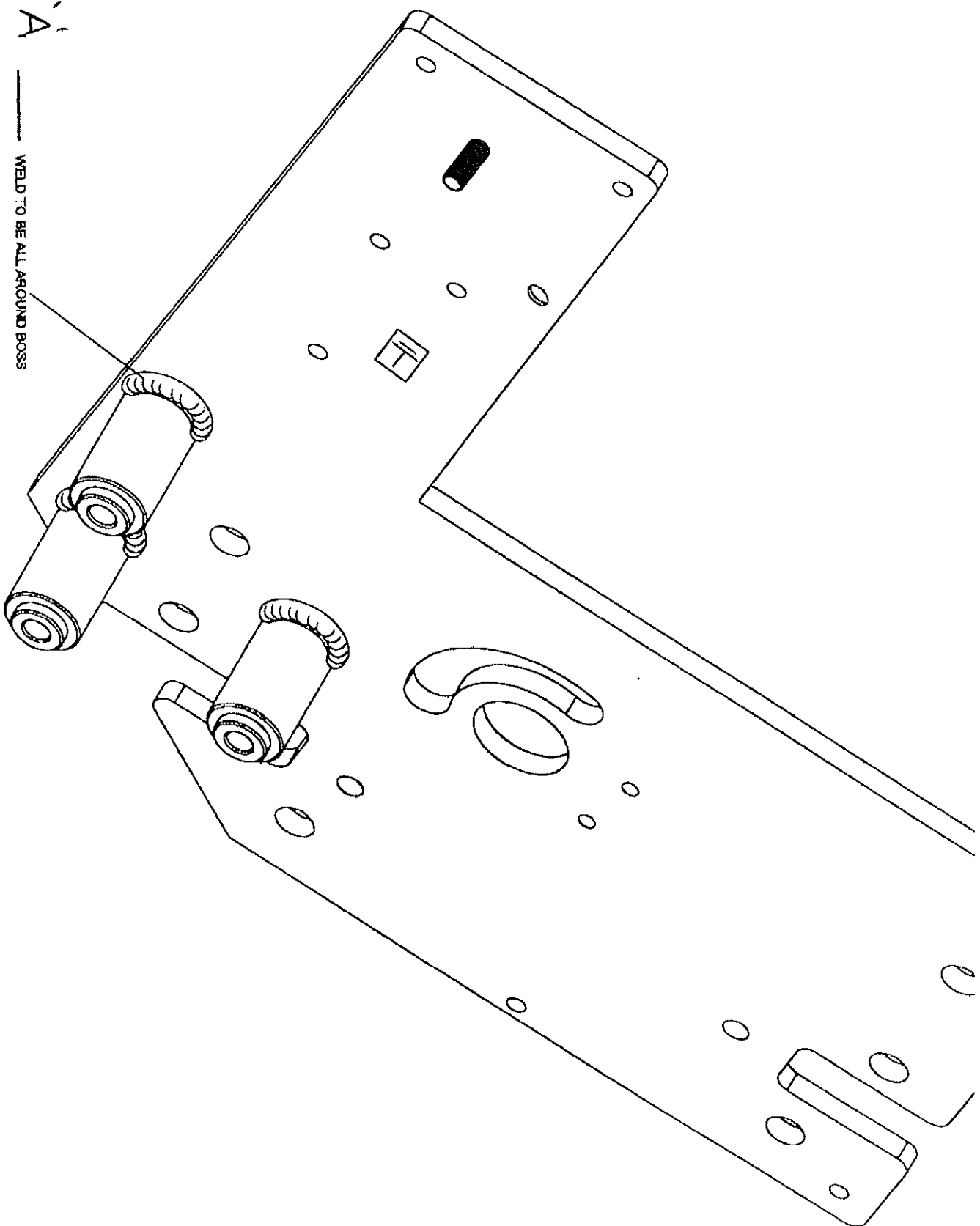
The original design did not have a full weld at "A" and no weld on the reverse side of the plate.

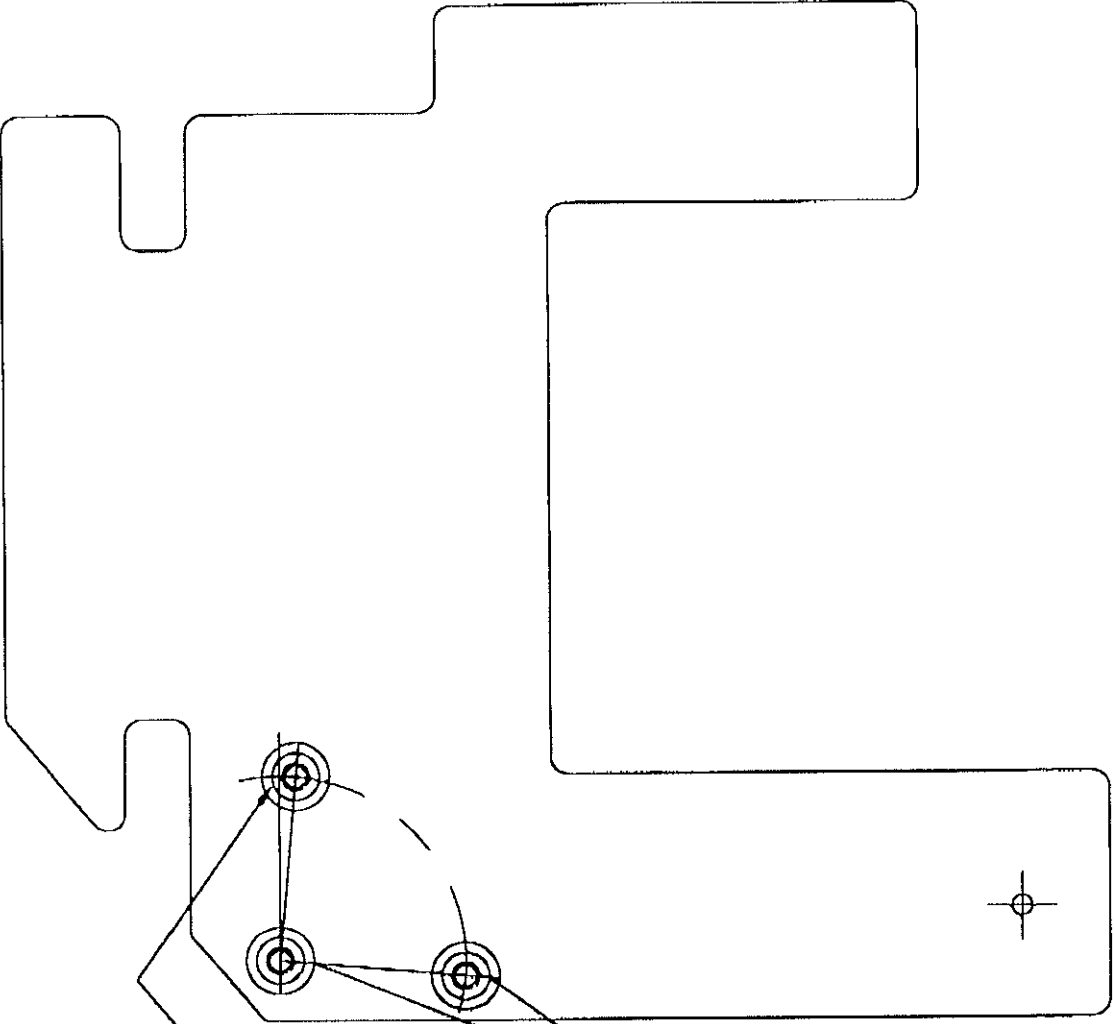
The MODIFIED boss has both a full weld at the front and a puddle weld on the reverse side, the latter being dressed back as indicated on page 4.

Duncan Dando
Quality Manager
29/8/2000

A

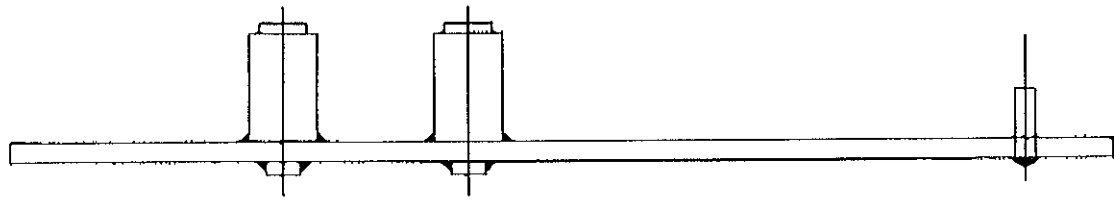
WELD TO BE ALL AROUND BOSS





CONTINUOUS WELD
BOTH SIDES

CONTINUOUS WELD ON FRONT
WELD ON BACK TO BE
DRESSED BACK TO WITHIN
2.5mm. OF PLATE SURFACE.



ate March 2000

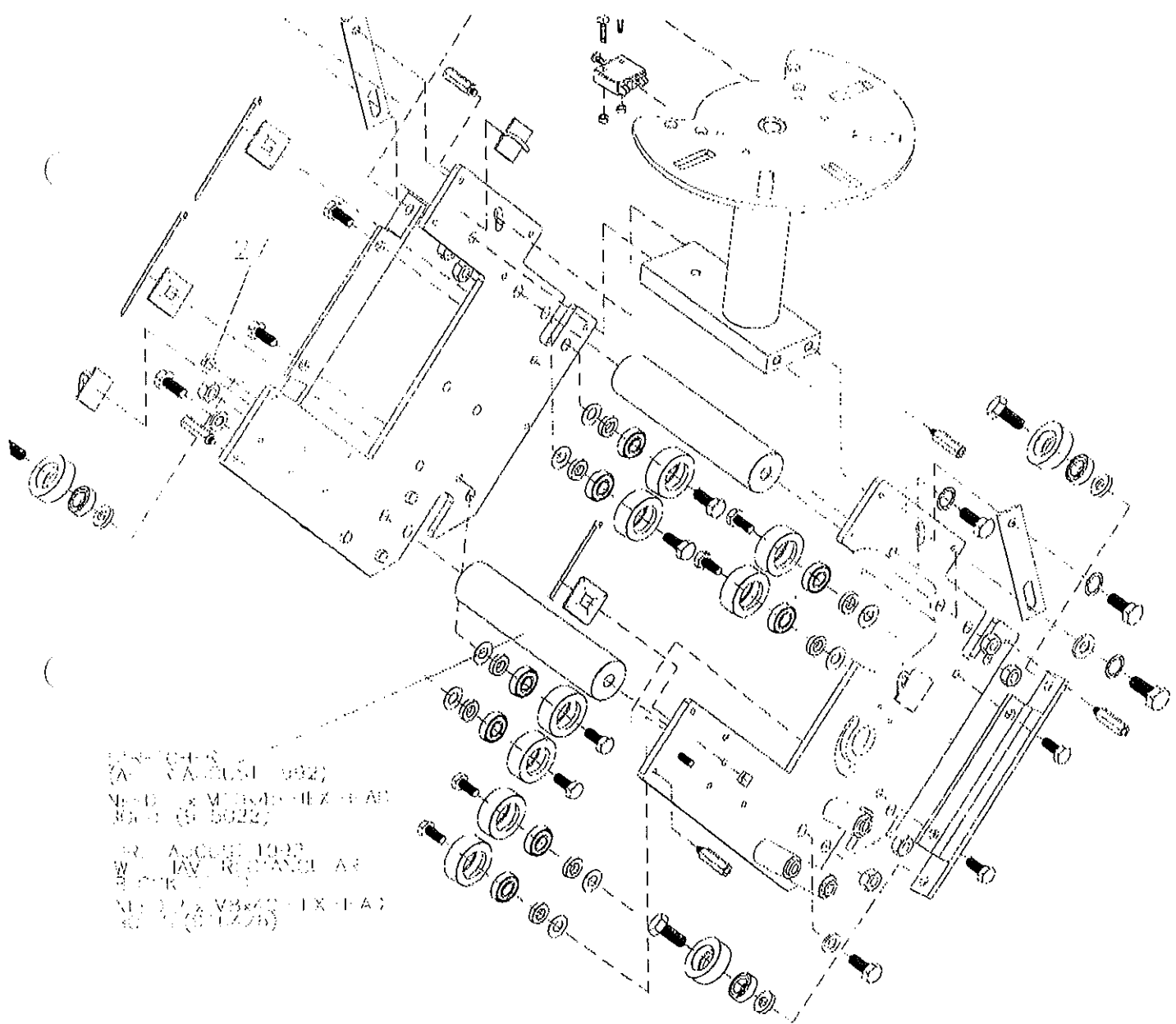
etro-Fit on Classic Straight Lifts.

depending upon age and quality of lift - Chassis Plate on the footrest side only is to be removed and replaced with either RD2069 or RD2070 (depending on handing) and a hole drilled to suit the shape of plate.

Criteria:

- Stand Perch platform Classic Straight Lifts.
- Bridging platform Stairlifts.

Replace Footrest Side Chassis Plate upon inspection if finding NO CONTINUOUS weld on front edge. See page 2



The following actions should be taken regarding lifts requiring safety upgrade as explained in the previous Technical Bulletin.

Lifts affected are all Stand/Perch type or Straight lifts used in conjunction with a bridging platform.

Serial numbers W92***** to W99***** should be examined, as per the info. provided in the Technical Bulletin.

Only submit information regarding lifts requiring an upgrade.

1. In storage – Applies to Stand/Perch Only

Initially please provide a list of serial numbers to D.Dando, Quality Manager at Bison Bede Ltd.

The return of the lifts to Bison Bede Ltd for modification will be organised by Bison Bede Ltd.

2. When re-siting – Stand/Perch or Platform

As above, prior to re-siting.

3. At service/breakdown visits – Stand/Perch or Platform

Provide D.Dando, Quality Manager at Bison Bede Ltd with the following detail for each unit.

Lift Type (Stand / Perch or Platform)
Serial Number
Client Name
Address incl. post code
Telephone Number, where available