

TB 121

TECHNICAL BULLETIN

INFORMATION ONLY

MAINTENANCE ISSUE

For the Attention of : Service Engineers, Installers, Trade Customers, Training Dept

Date : 08/12/11

Product : Midilift XL+ - Traction platform lift

Subject : Guide brackets

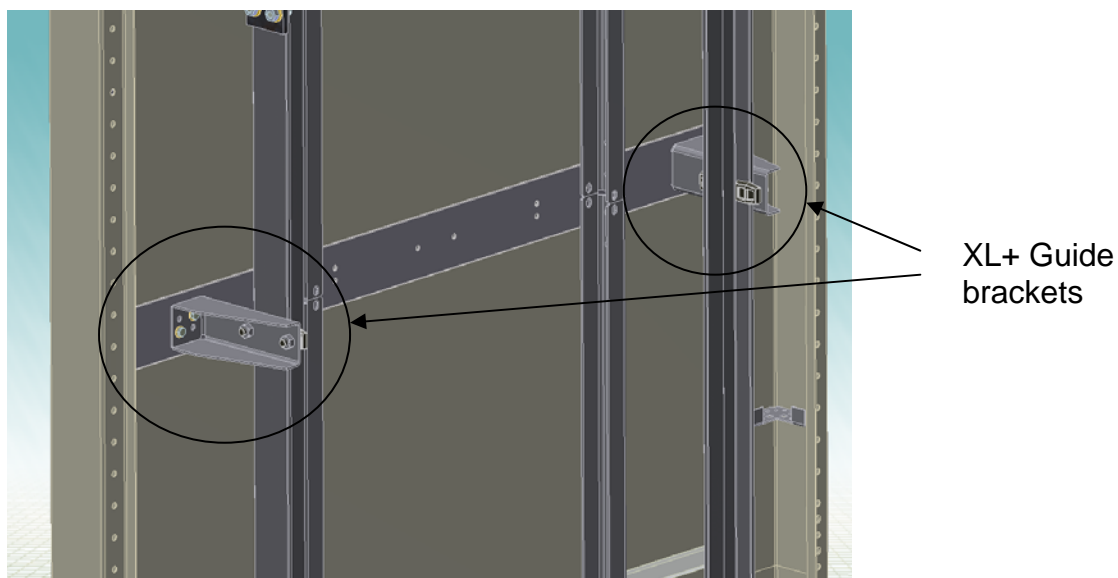
Pages : 2

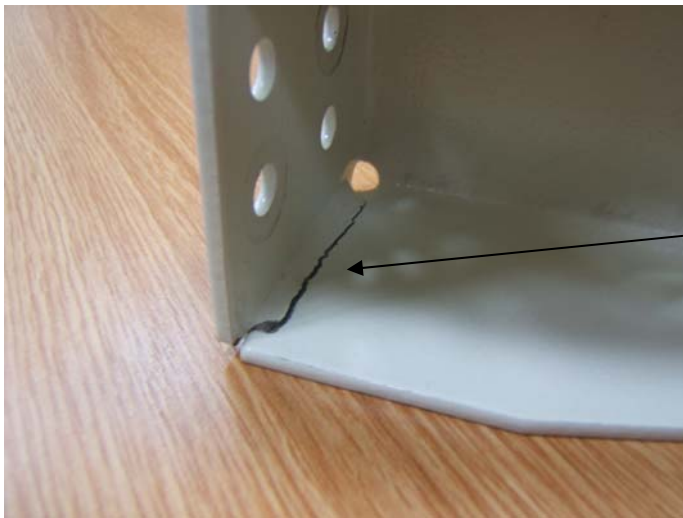
Originator : Stannah Lifts Ltd, Anton Mill, Andover, Hants SP10 2NX 01264 339090

Detail

It has come to our attention that a quality issue has arisen on a batch of welded guide brackets fitted to the XL+ product. We have isolated the potentially defective parts to a given period of time, but require all lifts to be inspected.

The weld failure is not critical to the operation of the lift after handover but if identified, should be replaced. A replacement part is available free of charge from our spares department.





Example
of weld
breaking

Summary

- An unknown quantity of sub standard welded guide brackets has been fitted to the XL+ product.
- Please visually inspect the brackets during the next service to see if there are any signs of cracking.
- To request a replacement part please contact our spares department quoting part number 6205004. The replacement will be sent out as a warranty replacement free of charge.

If you have any further questions please contact either John Moule or Richard Baugh on 01264 339090.