



SAFETY UPDATE

Issue 10 October 2018

THIS ISSUE

NEWS

HSE CONSTRUCTION DUST CONTROL 'BLITZ' STARTS

RIBA PUBLISHED DRAFT POST GRENFELL FIRE SAFETY PLAN

CROSSRAIL BEST PRACTICE H&S GUIDES

DVLA ASKS DRIVERS TO LOOK AGAIN IN NEW EYE CAMPAIGN

CASES

FALL FROM HEIGHT

FATAL BURNS IN OXYGEN RICH AREA

MOVING MACHINERY

MEWP OVERTURNS

GAS FITTINGS

VEHICLE/TRAILER FATALITY

FALL FROM HEIGHT

PUBLICATIONS

HIGHWAYS, RAIL AND WATER HEALTH & SAFETY HUBS

NEWS

HSE CONSTRUCTION DUST CONTROL 'BLITZ' STARTS

Regulator inspections will check health taken as seriously as safety

HSE inspectors are visiting construction sites throughout October 2018 to "see if health is being taken as seriously as safety".

Inspectors will be focusing on "builders' lungs" and the regulator is therefore advising all to read the relevant [HSE Guidance](#) in order to "know the risk, plan your work and use the right controls".

The project inspections will be conducted nationwide with enforcement action likely when 'material breaches' of legal duties are found.

The HSE website also contains useful [Guidance to Inspectors](#) on:

"Inspecting and enforcing where inadequate standards of control are found for construction dust risks. It focuses on common tasks, prioritising those with the potential for significant exposure / risk of ill-health."

Diseases cause permanent disability

The HSE guidance stresses that:

The Lift and Escalator Industry Association
33-34 Devonshire Street
London
W1G 6PY
0207 935 3013

HSE is now in your area



Is your site ready for a health inspection?

 Join the conversation at: SaferSites



Find out more: [hse.gov.uk/construction](https://www.hse.gov.uk/construction)

"Regularly breathing construction dust can cause diseases like lung cancer, asthma, Chronic Obstructive Pulmonary Disease (COPD) and silicosis. Construction workers have a high risk of developing these diseases because many common construction tasks can create high dust levels.

These diseases cause permanent disability and early death. Over 500 construction workers are believed to die from exposure to silica dust every year."

RIBA PUBLISH DRAFT POST GRENFELL FIRE SAFETY PLAN

Architects institute consults on 'golden thread of fire safety information'

The RIBA is seeking views on the proposed structure, roles and key deliverables set out in a draft RIBA Plan of Work for Fire Safety.

This process map and associated deliverables list enables a "golden thread of fire safety information" from the point at which a building project is identified through to the ongoing management of the building.

The draft RIBA Plan of Work for Fire Safety includes:

- **New statutory process based on Hackitt Review recommendations;**
- **Fire safety roles by work stage;**
- **Review and sign off procedures by the client team, design team and construction team;**
- **CDM 2015 style duty-holders; and**
- **Key deliverables by role and stage.**

There are 2 consultation files can be [downloaded](#) from the RIBA website.

The PDF file 'Consultation Document' includes the draft RIBA Plan of Work for Fire Safety and an additional diagram and table that identifies the failings in the industries current processes and explains the proposed solutions.

These should be read alongside the Word file 'Consultation Questions' which ask for feedback on the process map and a draft set of deliverables by role and stage that relate directly to the RIBA Plan of Work for Fire Safety.

Replies on the consultation document should be sent to practice@riba.org by 15 October 2018.

		0 Strategic Definition	1 Preparation and Brief	2 Concept Design	3 Developed Design	4 Technical Design	5 Construction	6 Handover and Closeout	7 In Use
		Briefing		Design		Delivery		Occupation	
				Planning		Tender Action			
Statutory Gateways					Gateway 1	Gateway 2	Gateway 3		
Building Regulations Requirements				B1, B5	A, B4, M		B2, B3, 7		
Fire Safety - Design Decisions									
Statutory Bodies	HSE				HSE3	HSE4	HSE5	HSE6	HSE7
	Local Planning Authority			LPA2	PLANNING APPROVAL LPA3	LPA4			
	Building Control Body			BCB2	BCB3	DETAILED FULL PLANS APPROVAL BCB4	COMPLETION APPROVAL BCB5		
	Fire and Rescue Authority			FRA2	FRA3	FRA4	OCCUPATION APPROVAL FRA5	SAFETY CASE REVIEW FRA6	SAFETY CASE REVIEW FRA7
Client Team	Client/Building Owner	OUTHOLDER	KEY REQUIREMENTS CBO1	RFI1 CBO1	FRM1 CBO1	CR03	CR04	PRE-OCCUPATION AGREEMENT CBO5	INITIAL SIGNOFF CBO6
	Users/Residents		U1	U2				U6	U7
	Facilities Manager/Building Safety Manager		FM1				FM5	FM6	FM7
	Project Lead		PL1	PL2	PL3	PL4			
	Insurer/Warranty Provider		IN1				IN4	IN5	
	Clerk of Works						CW4	CW5	
Design Team	Principal Designer	OUTHOLDER		FIRE SAFETY STRATEGY PD1	FIRE SAFETY COORDINATION PD2	FIRE SAFETY SPECIFICATION PD4	INSPECTION REPORTS PD5	INITIAL SIGNOFF PD6	
	Architect/Architectural Designer		A1	A2	A3	A4	A5		
	Structural Engineer			SE2	SE3	SE4	SE5		
	Building Services Engineer			BS2	BS3	BS4			
	Specialist Consultants			SC2	SC3	SC4			

CROSSRAIL PUBLISH BEST PRACTICE H&S GUIDES

Sharing major project best practice can leave a lasting legacy

Crossrail has announced that it is “committed to sharing best practices” on projects and with the wider construction industry. The aim is to leave a lasting legacy.

<http://www.crossrail.co.uk/sustainability/health-and-safety/industry-best-practice-guides>

The Best Practice Guides published include:

- Construction Fire Safety
- Lifting Operations

The website also has links to the Crossrail Learning Legacy resources -sharing website with information gleaned from the works:

- Project Management
- Health & Safety
- Environment
- Information Management
- Engineering

Team Structure & Roles

Do you know?

To execute safe lifting practise it is important to know and understand the roles and responsibilities of team members.


There are three key positions for planning and executing lifting operations:



Appointed person
Responsible for planning and controlling all aspects of the lift, (producing the lift plan, method statement, risk assessment and choosing the crane and accessories).



Crane Supervisor
Responsible for supervising the lifting operation and ensuring the lift plan is adhered to and the method statement is followed.



Slinger/Signaller
Responsible for attaching/detaching the load and directing the crane using the agreed signalling method.

Competency

Do you know?

- The relevant qualifications of team members related to lifting activities should be approved and recorded.
- Lifting operatives must have a valid CPC card (Red: Trained Operative, Blue: Competent Operative) or ALLMI (Association of Lorry Loader Manufacturers and Importers).
- Training and mentoring should be ongoing for everyone (red card operatives need a minimum 300hrs to be eligible to apply for blue card).



DVLA asks drivers to look again in new EYE 735T campaign

DVLA is launching a national eyesight awareness campaign

Drivers will be encouraged to take the 'number plate test' - a quick and easy way to check they meet the minimum eyesight requirements for driving. By law, all drivers must meet the minimum eyesight standards at all times when driving - this includes being able to read a number plate from 20 metres.

The campaign is reminding the public that they can easily check their eyesight by taking the 20 metres test and is pointing out some ways to quickly identify 20 metres at the roadside. It is advising that 5 car lengths or 8 parking bays can be an easy way to measure the distance.

The campaign is encouraging anyone with concerns about their eyesight to visit their optician or optometrist for an eye test.

Dr Wyn Parry, DVLA's Senior Doctor, said:

The number plate test is a simple and effective way for people to check their eyesight meets the required standards for driving. The easiest and quickest way to do this is to work out what 20 metres looks like at the roadside - this is typically about the length of 5 cars parked next to each other - and then test yourself on whether you can clearly read the number plate. It's an easy check to perform any time of day at the roadside and takes just a couple of seconds.

Having good eyesight is essential for safe driving, so it's really important for drivers to have regular eye tests. Eyesight can naturally deteriorate over time so anyone concerned about their eyesight should visit their optician - don't wait for your next check-up.

<https://www.gov.uk/government/news/dvla-asks-drivers-to-look-again-in-new-eye-735t-campaign>

HSE Updated advice on mental health in the workplace

One in four people in the UK will have a mental health problem at some point. This can be a reaction to a difficult life event, such as bereavement, but can also be caused by work-related issues.

HSE has published updated guidance on mental health in the workplace. It explains how line managers can support employees and provides sources of further help and advice.

http://www.hse.gov.uk/stress/mental-health.htm?utm_source=govdelivery&utm_medium=email&utm_campaign=digest-oct-3-2018&utm_term=headline&utm_content=mental-health

The website also has a section entitled work-related stress and how to tackle it. This looks at six main areas of work design which can affect stress levels, as well as offering advice on how employers can protect employees from stress in the workplace



CASES

FLOOR CONSTRUCTION SYSTEM OF WORK UNSAFE

Welder fell 3m from mezzanine area through purlin openings

An agricultural engineering sole trader has been sentenced after a workman sustained serious, life changing injuries when he fell from a mezzanine floor under construction in March 2017.

Plymouth Crown Court heard how the company was contracted to install the mezzanine floor in a unit at the South Hams Business Park in Totnes.

A workman was engaged to help with the floor construction and was working on the mezzanine floor whilst it was still being constructed.

He fell some 3m through a gap between the floor purlins to the concrete floor below and suffered serious head injuries which kept him in hospital for many months to undergo neurological rehabilitation.

Insufficient measures to prevent falls

HSE found insufficient measures were taken to prevent a fall through the mezzanine floor while under construction.

The contractor pleaded guilty to breaching Regulation 4(1) of the Work at Height Regulations 2005 and was fined £2,500 and ordered to pay costs of £6,132.

Speaking after the hearing HSE inspector Allison George said:



"Falls from height remain one of the most common causes of work-related fatalities and injuries in this country and the risks associated with working at height are well-known.

Mr Mortimore's injuries were life changing for both him and his family. He could have easily been killed. This serious incident and devastation could have been avoided if basic safe guards had been put in place."

WORKER SUFFERS FATAL BURNS IN OXYGEN RICH AREA

Sparks from angle grinder ignited clothing of workman in confined space

A major water business has been fined £733,000 after a fitter suffered fatal burns when his clothing was ignited by sparks in an oxygen enriched area on a water treatment works in July 2015.

Leeds Crown Court heard that the workman was working in the bottom of a disused confined space whilst the adjacent area was still in service. The plant used oxygen gas injection to assist the clean-up process.

Whilst changing a stop valve using an angle grinder the sparks from the grinding wheel impinged onto his overalls which burst into flames. He suffered whole body burns and died in hospital two days later.

Oxygen enrichment increased fire risk

HSE investigators found the valve was half-opened and the atmosphere was oxygen-enriched, greatly increasing the risk of fire. The risk assessment and permit to work procedures were "inadequate" and employees were not familiar with the site and lacked the knowledge or experience to recognise the oxygen-enrichment hazard.

The water company from Bradford, pleaded guilty to breaching Section 2(1) of the Health and Safety at Work etc. Act 1974 and was fined £733,000 and costs of £18,818.

Speaking after the hearing, HSE inspector John Micklethwaite commented:



"This was a tragic and wholly avoidable incident, caused by the failure of the company to implement an adequate and effective safe system of work for work in a confined space.

Those in control of work activities have a duty to identify hazards that could arise, to eliminate or to mitigate them, and to devise suitable safe systems of work. The risk assessment process is central to this role."

MAJOR UK CONTRACTORS HIT BY MAJOR FINES

Firms ordered to pay over £3m after foot trapped in rotating 'screw'

Two major UK construction companies have each been ordered to pay over £1.5m in fines and prosecution costs after the foot of a workman was trapped by rotating screw in March 2015.

Liverpool Crown Court heard how the companies were upgrading Water Treatment Works in Cheshire.

During commissioning work the man's foot became trapped in the large rotating screw which led to the amputation of three of his toes.

Failures to plan and manage

HSE investigators found that both companies failed to properly plan and manage the commissioning work.

The two companies were found guilty of breaching Section 3 (1) of the Health and Safety at Work Act 1974 and were each fined £1,400,000 with a total of £101,046 in prosecution costs.

Speaking after the case, HSE inspector David Argument said:



"This injury was easily preventable. The commissioning work should have been properly planned and managed.

Employers should make sure they properly assess and apply effective control measures to minimise the risk posed by dangerous parts of machinery."

INCIDENT: MEWP OVERTURN IN CITY CENTRE

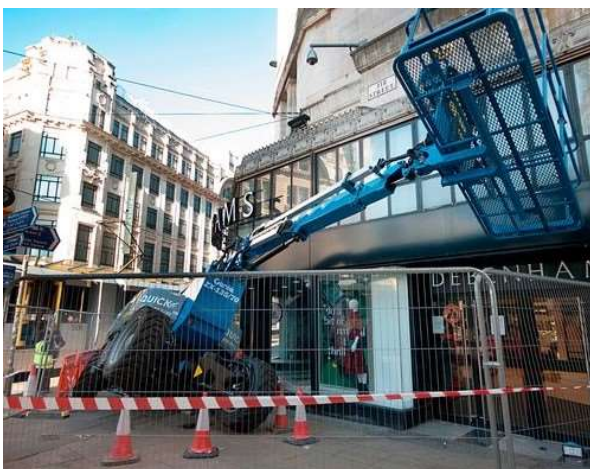
Images show aftermath of mobile elevating platform collapse

The *Manchester Evening News* has [published](#) images showing the aftermath following the overturn of a mobile elevating working platform (MEWP) on Market Street in Manchester city centre on 5th September 2018.

The images appear to show that the ground beneath the MEWP may have given way under the weight of the machine.

Manchester City Council "made the site safe" and will be "carrying out an assessment of the pavement".

A council spokesman told the *News*:



"Following the collapse of a crane, our team have made the site safe. They will assess the condition of the highway after the crane has been removed.

Metrolink have also assessed the site and I'm told that a normal service is running."

MAJOR HOMES BUSINESS EXPOSED PUBLIC TO RISK

Residential property refurb project created carbon monoxide danger

A major UK construction business has been fined £1,250,000 after members of the public were exposed to carbon monoxide fumes in December 2014 at residential apartments near Milton Keynes. Aylesbury Crown Court heard how a number of gas installations were found to be either immediately dangerous or at risk following the report of a smell of gas by a householder.

HSE investigators found that the company built the flats several years before the incident and in 2014 some remedial work was needed to be carried out on an external wall.

During the demolition and reconstruction of the wall, many live flues of gas boilers were removed damaged and blocked, exposing the residents to a risk from carbon monoxide poisoning.

Huge fined imposed on Principal Contractor

The company as the Principal Contractor had not ensured that an adequate system of work was in place to manage the risks from working around the live flues.

The defendant from Letchworth Garden City pleaded guilty to breaching Section 3(1) of the Health and Safety at Work etc Act 1974 and was fined £1.25 million and ordered to pay cost of £23,972.33.

Speaking after the hearing, HSE inspector Stephen Faulkner said:



"Risks from gas installations, including those related to carbon monoxide, need to be managed by all during refurbishment."

"This incident could have been avoided if the company had implemented a safe isolation system for the live boilers."

DRIVER DIED TRAPPED BETWEEN TRAILER AND VEHICLE

Firm fined £1.5 million over failure to assess coupling operations

A logistics company has been fined after a worker died when he was trapped between a trailer and his vehicle in January 2016.

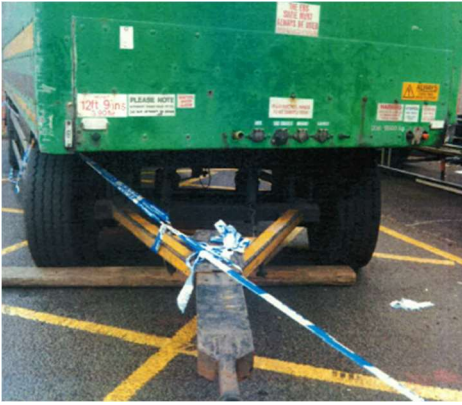
Dudley Magistrates heard how an employee was fatally injured whilst attempting to attach a trailer to a vehicle. The trailer was parked on a slight slope and rolled forward trapping the employee.

Assessment of should identify the unique hazards

An HSE investigation found safety management arrangements for coupling trailers to vehicles failed to take account of the slope.

The company from Dudley pleaded guilty to breaching Section 2 (1) of the Health and Safety at Work Act 1974 and has been fined £1.5 million and ordered to pay costs of £32,823.35

Speaking after the hearing, HSE inspector Karl Raw said:



"Had the defendant taken the slope into account, simple measures could have been taken that would have prevented this incident.

Workplace transport remains a high-risk environment, and this case serves as a reminder to industry that assessments of sites should be specific and identify the hazards unique to each yard. It is also a reminder that the slope a vehicle is parked on does not need to be steep for incidents to occur."

RISK ASSESSED PRECAUTIONS NOT IMPLEMENTED

Action not paperwork essential to prevent fall during lifting operation

A major steel company has been fined £450k for safety breaches after a worker fell into an open pit in February 2014.

Sheffield Crown Court heard how the workman was emptying a skip at the bottom of an open pit using an overhead crane operated by a driver.

Two floor plates covering the pit were removed and the skip emptied and replaced. Whilst replacing the plates he fell some 3-4m into the pit and sustained injuries including damage to his kidney and ribs.

Barriers should have been provided

HSE investigators found that a risk assessment was completed in October 2012 identifying the need to provide a barrier when the floor plates were removed to empty the skip.

However, a barrier was not provided round the pit until after the incident.

The company pleaded guilty to breaching Section 2(1) of the Health and Safety at Work etc. Act 1974 and was fined £450,000 with £32,099 costs.

After the hearing, HSE inspector Mark Welsh commented:



"A fall from this height into a pit containing various metal objects could easily have resulted in a fatality. Companies should act swiftly if and when risks are identified and relevant control measures should be put in place when working at height."

PUBLICATIONS

HIGHWAYS, RAIL AND WATER HEALTH & SAFETY HUBS

Websites providing information, alerts and tools

Although aimed primarily at the construction sector, various organisations operating in the water, highways and rail sectors produce 'Health and Safety Hubs' to share information between the clients and project partners.

Highways Hub

The Highways Safety Hub (<http://www.highwayssafetyhub.com/>) website is currently administered by one of the partner companies and the intellectual property belongs to the group as a whole and is endorsed and promoted by Highways England as its main H&S portal and resource library.

Rail Hub

The Safety Central Hub (<https://safety.networkrail.co.uk/>) is a one-stop shop to promote best practice health and safety within the rail industry containing a multitude of health and safety topics, advice and guidance, contacts, and resources including presentations and safety videos.

Water Hub

The Water Health and Safety Hub (<http://www.healthandsafetyhub.co.uk/>) is an online resource-sharing initiative between Thames Water and its partners, designed as a one stop shop for all health and safety material.

It aims to promote best practice in health and safety and disseminate lessons learnt across all partners.